



Industry's involvement in managing emergencies affecting the surrounding Community. HEAT Case study, SA

10 April 2008 –Dublin.

**Hannes du Toit, Manager
Emergency Management
Sasol Secunda Shared Services
South Africa**



Overview

- Overview
- JOIFF AGM, SA
- MHI/COMAH
- Risk to Community
- Emergency Warning systems
- Operation Vikeleka 97, to be protected
- HEAT history
- Operation Shelter 2000
- 2002 to 2008
- Future

Sasol's global activities

sasol's global activities



Notes:

- Information on the Sasol Group structure and the company's main products can be obtained from the 2002 Sasol annual report or the website www.sasol.com
- This report covers the activities of Sasol's global operations in which the company has operational control, focusing only on those issues that are significant at a Group level and that fall within the reporting period.

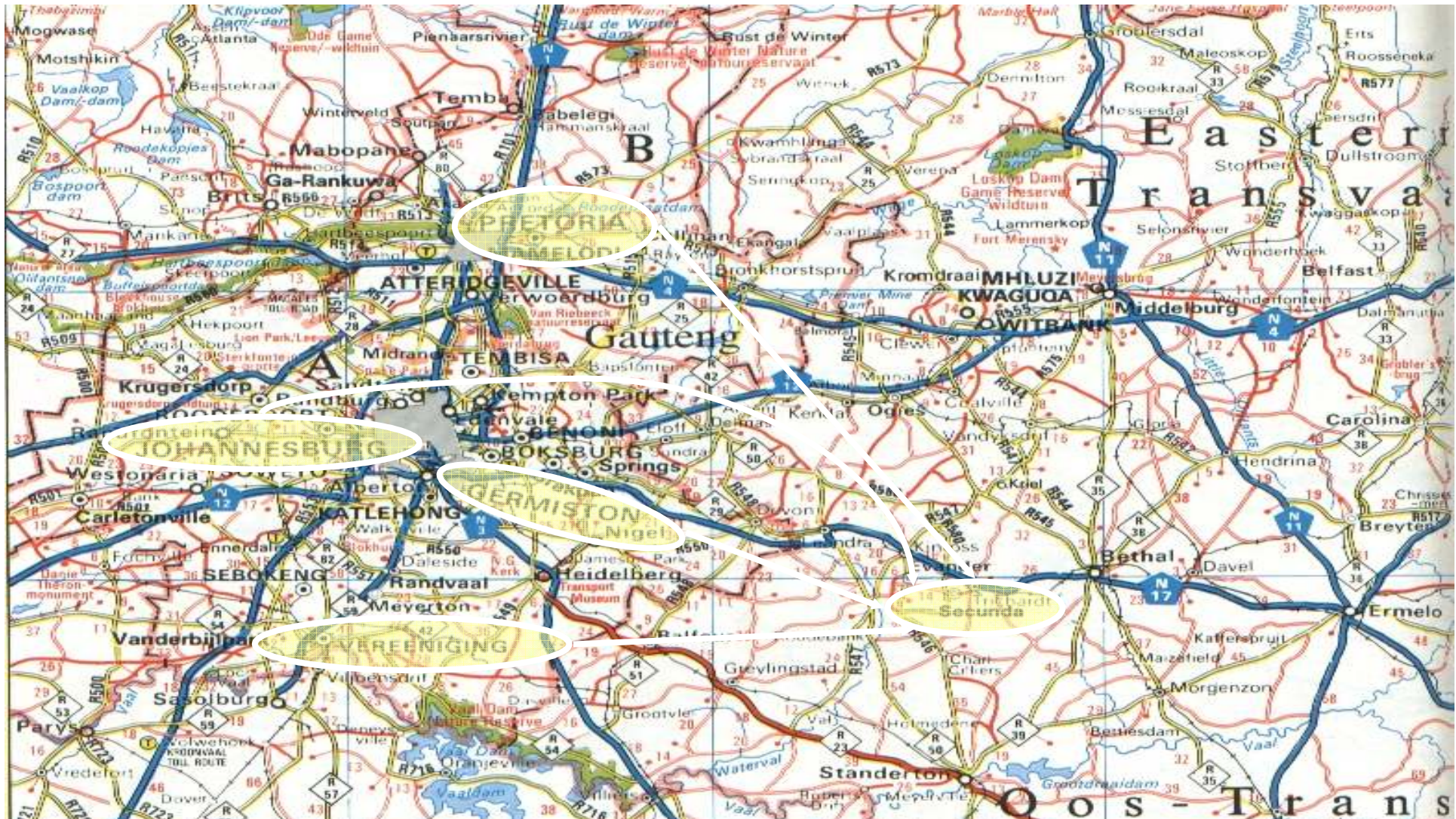


Sasol Secunda site





Geographical location



Training









vodacom

IRB
RUGBY
2007
2nd 42 : 18
ENG 3 9 RSA





Some Afrikaans words

- Lekka, lekker, nice
- Ag kak man
- Bakkie
- Baie dankie – buy a donkey
- Windgat

Phenosolvan Tank 21 June '04







the tank fire (X104)
th November 2007
ngen Refinery

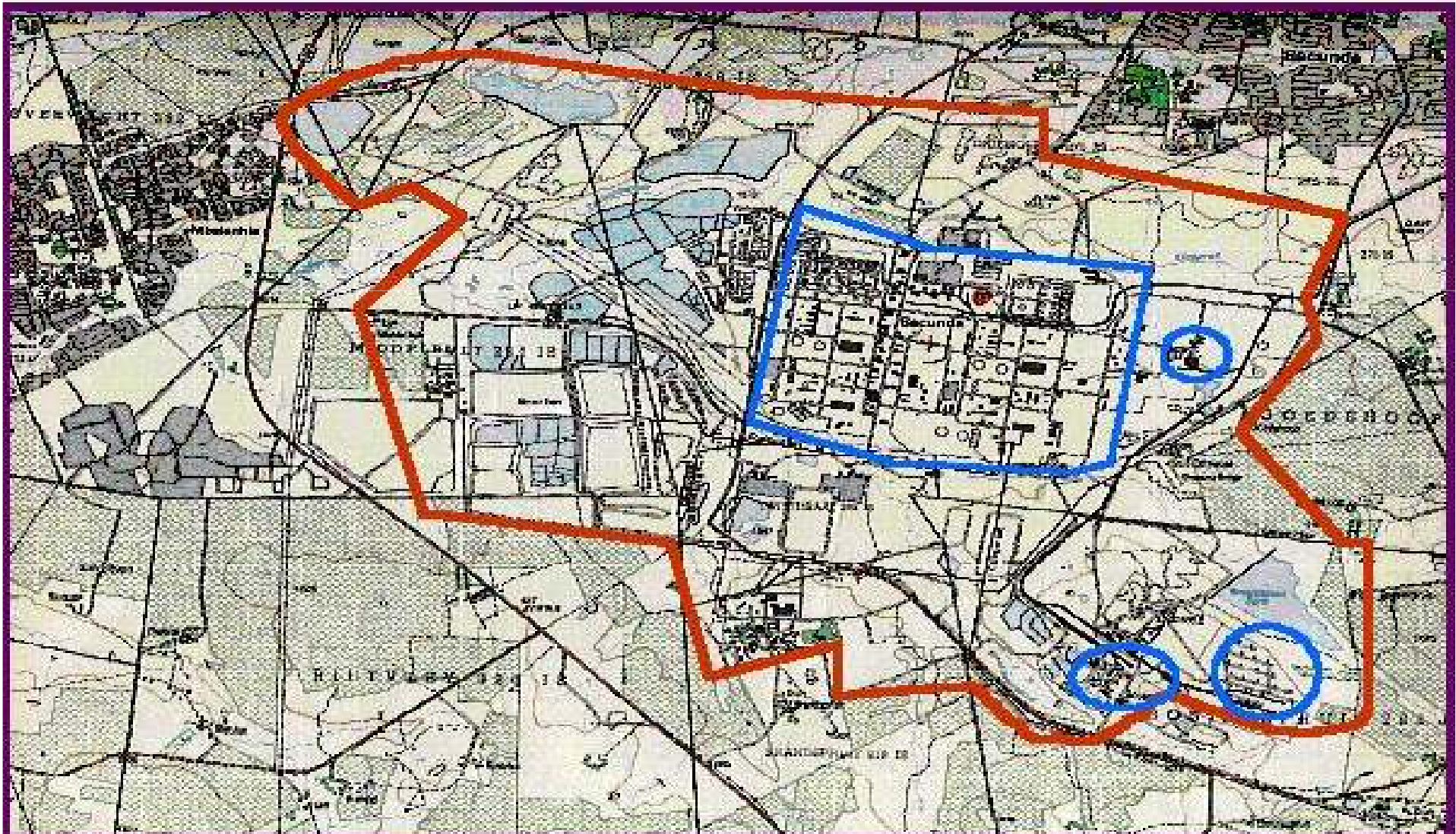








11/11/2019



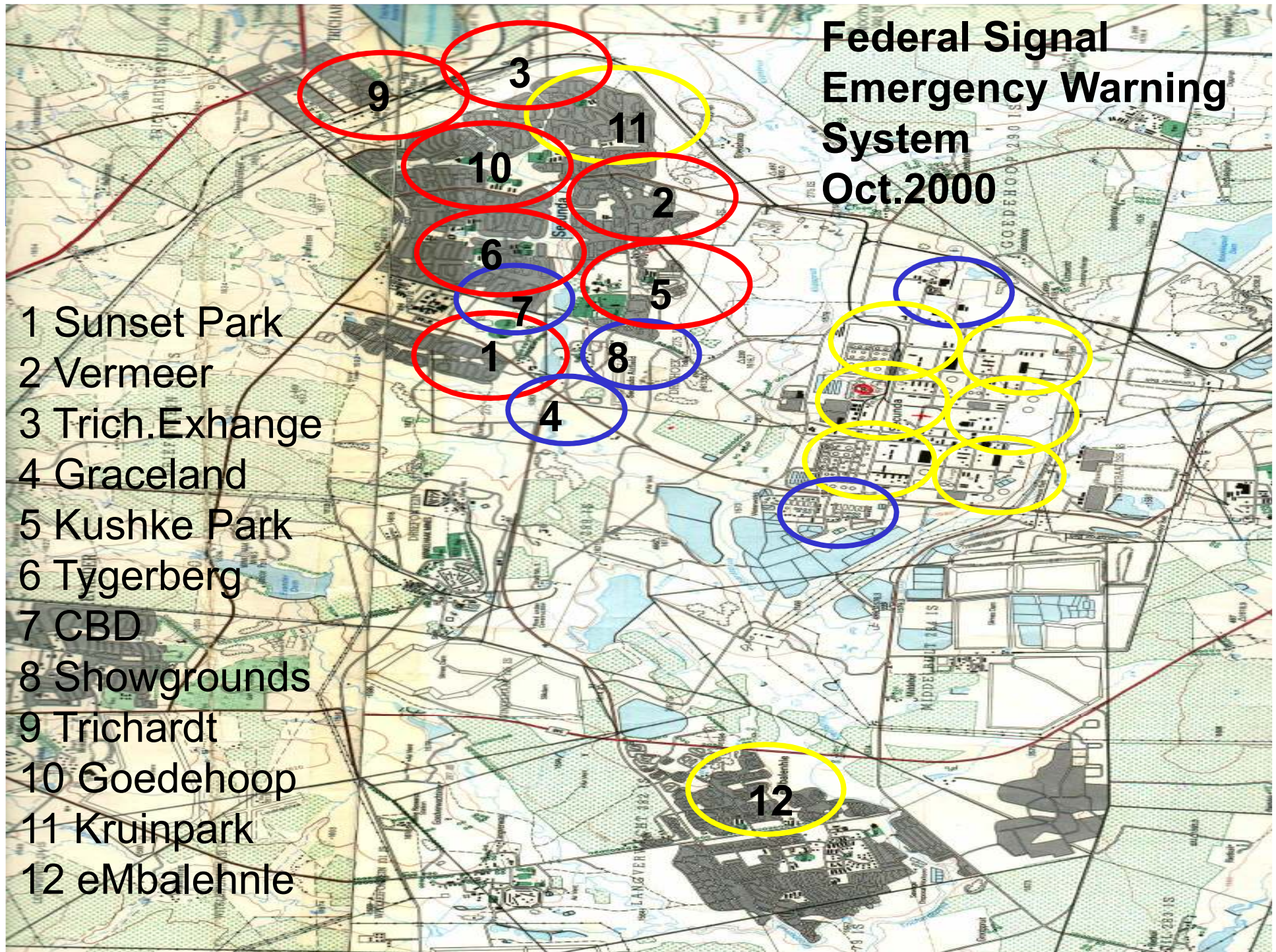


Federal Signal Emergency Warning System



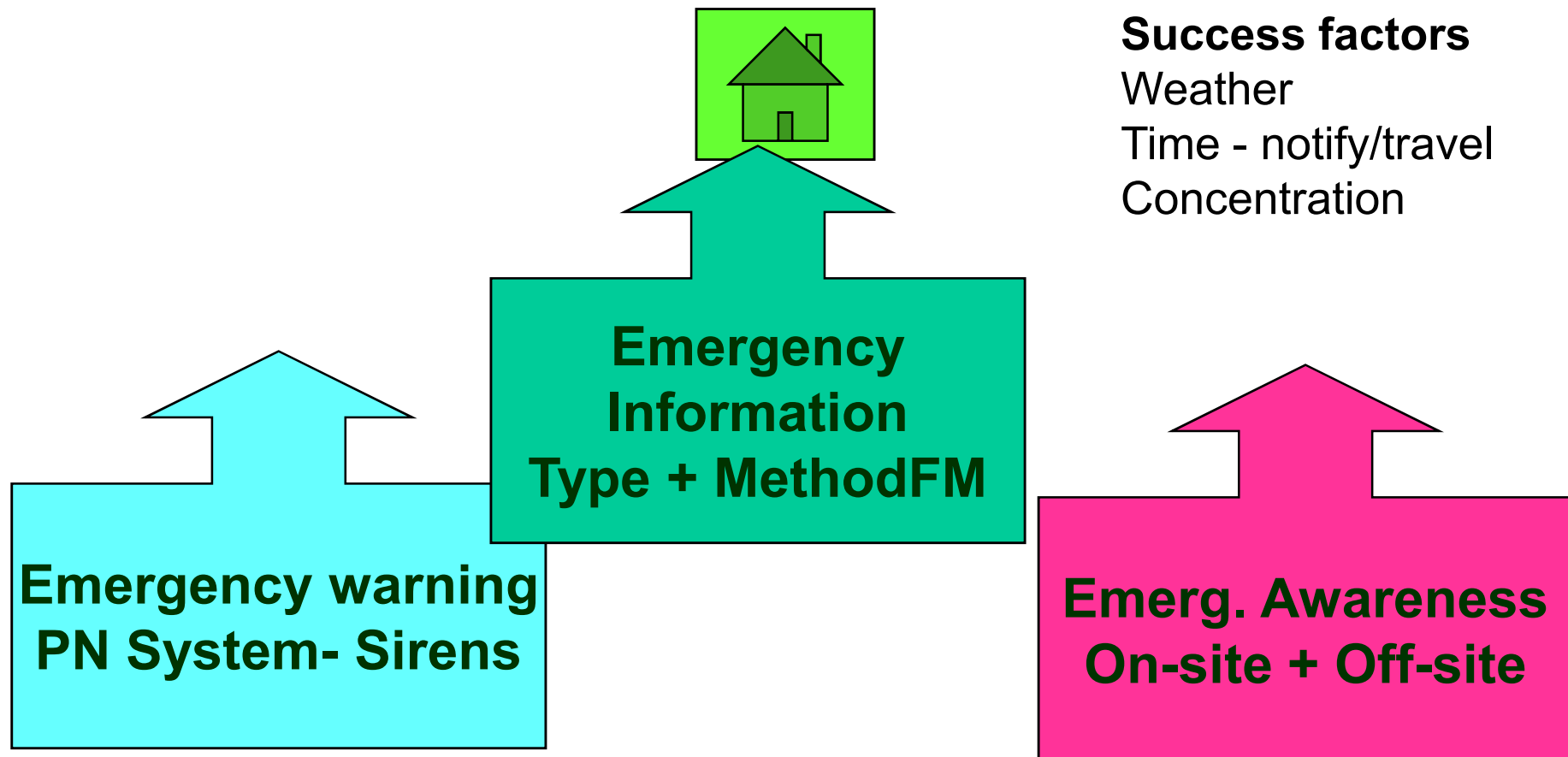
Federal Signal Emergency Warning System Oct.2000

- 1 Sunset Park
- 2 Vermeer
- 3 Trich.Exchange
- 4 Graceland
- 5 Kushke Park
- 6 Tygerberg
- 7 CBD
- 8 Showgrounds
- 9 Trichardt
- 10 Goedehoop
- 11 Kruinpark
- 12 eMbalehnle



Emergency Communication - Public notification philosophy

Emergency Manangement Programme



Success factors

Weather

Time - notify/travel

Concentration



Emergency Communication - Approach

- **GO IN**
- **STAY IN**
- **TUNE IN**
- **ALL CLEAR**

Operation Vikeleka '97















**TO FACILITATE PRO ACTIVE
EMERGENCY MANAGEMENT TO
THE BENEFIT OF THE HIGHVELD
RIDGE COMMUNITY**



Highveld Ridge Emergency Action Team (HEAT)

- **Vision**
- **Members**
- **Work sessions**
- **Subgroups**
- **IMS/Communication/Ambulance/ Strategy/Y2K**
- **HEAT Pty(Ltd) Sect 21**

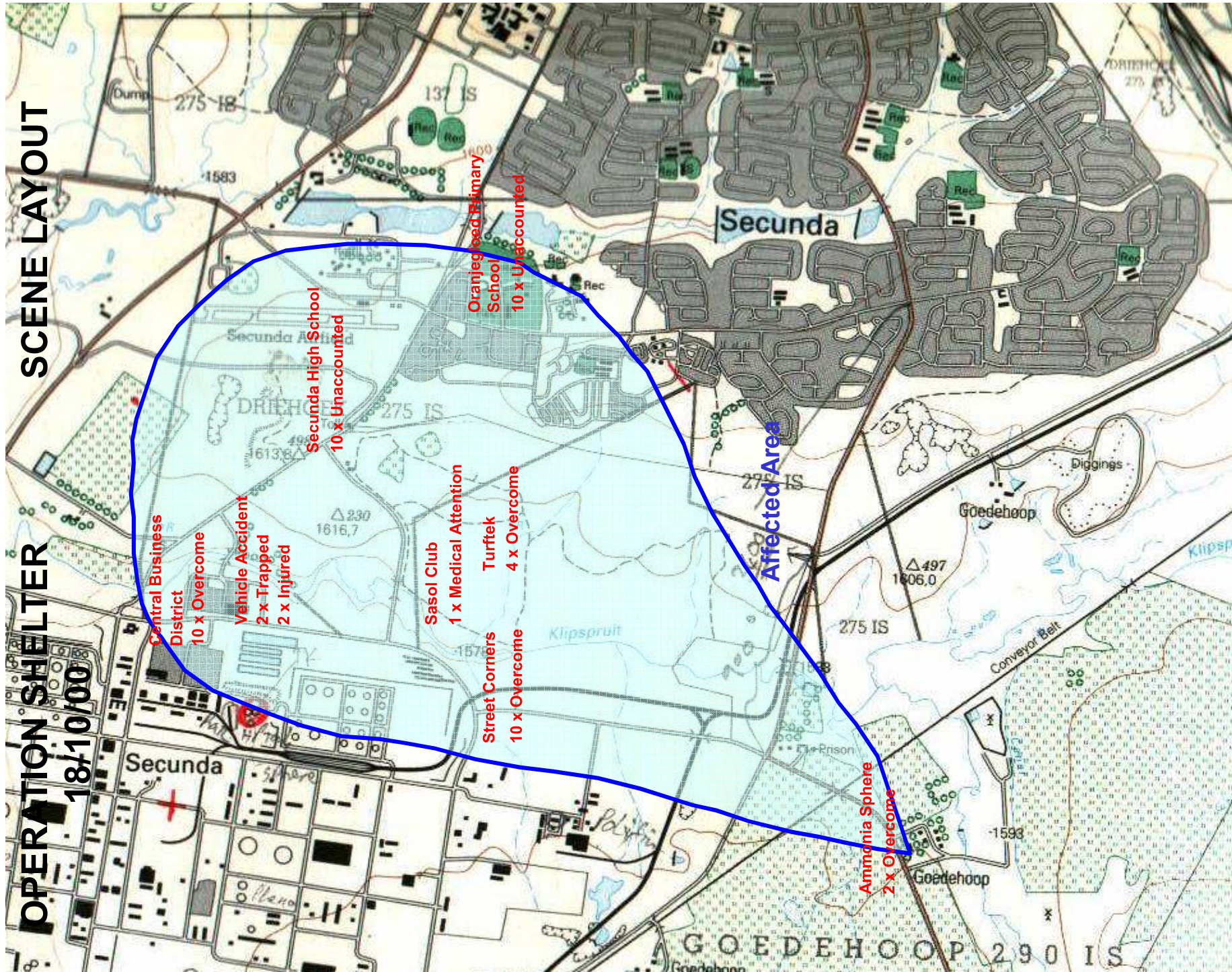
2000 HEAT Program

- | | |
|---|----------------|
| ● Public Notification Upgrade | May – August |
| ● Input on Sasol Highveld Ridge Emergency Procedure | February |
| ● Public Information on Notification System upgrade | May – August |
| ● Trichardt station / Exchange yard Emergency Exercise | June |
| ● Emergency Awareness – Public Notification System | August onwards |
| ● Sasol Agri Exercise | June |
| ● Blood Marathon – SABTS | July |
| ● Communication Systems Exercise for exercise 2000 | August |
| ● Highveld Ridge Emergency Exercise – Operation SHELTER | October 18 |

OPERATION SHELTER

18/10/00

SCENE LAYOUT

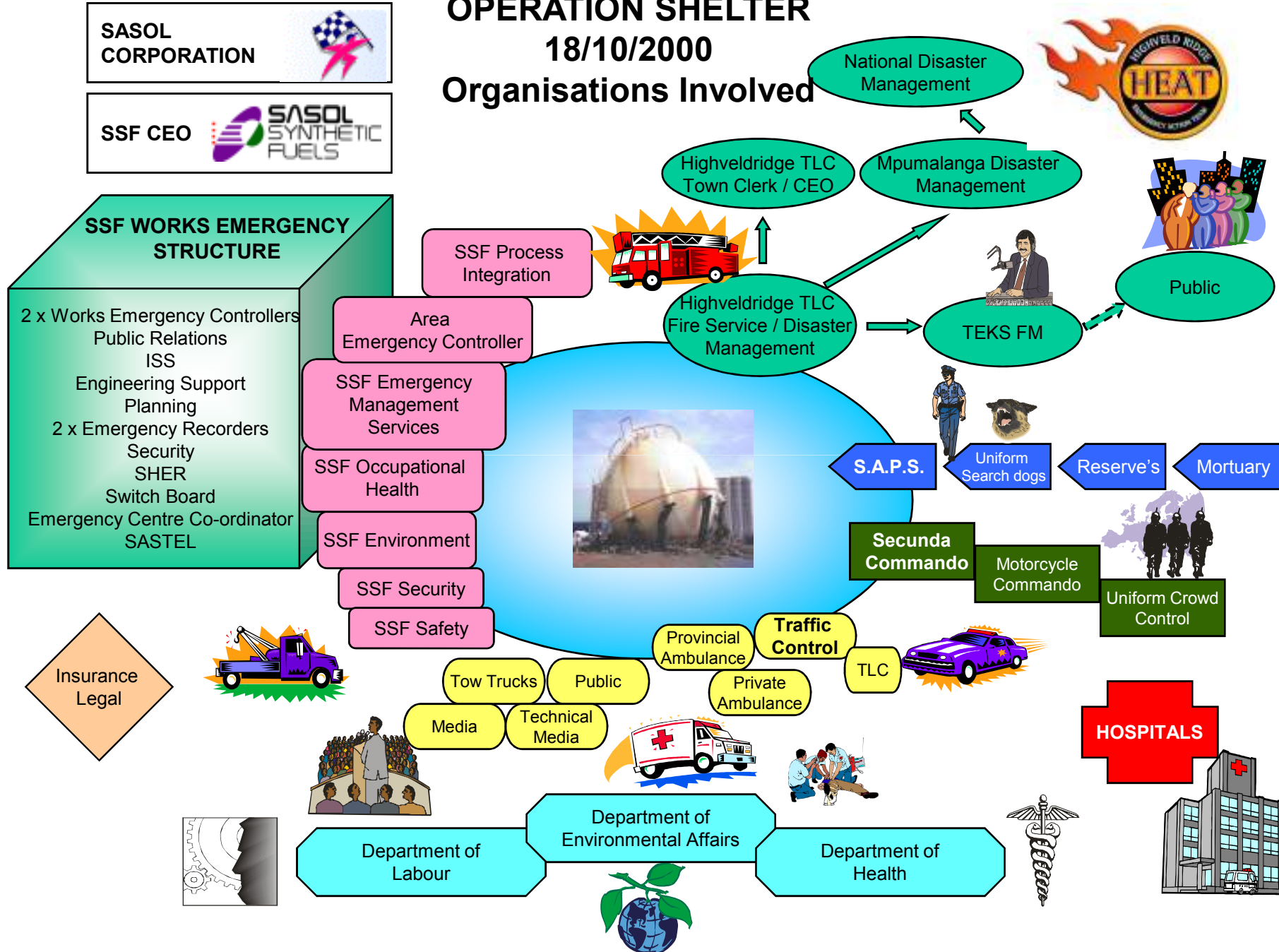


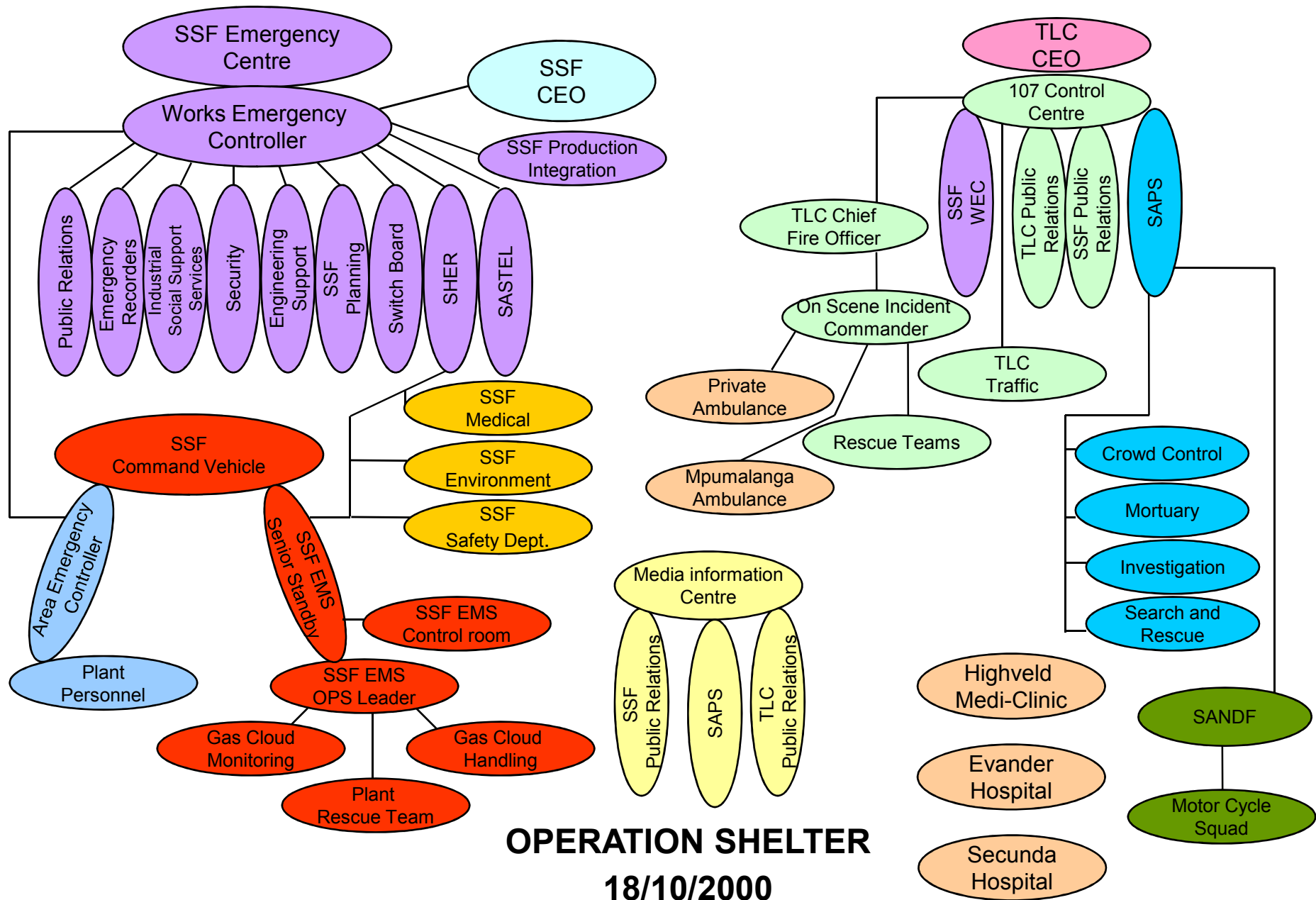
Ammonia release





Organisations Involved





OPERATION SHELTER

18/10/2000

Incident Management System

Interviews



Councilors

**Pamphlets,
Magnets,
Gumboyles**

Technical

Posters

Churches

Sasol Video



Media

Schools

NGO

**Local
Papers**

**Movie -, TV
-,
Roll Ads,**

Banners



**OPERATION SHELTER
Communication**

Posters

**Town
Meetings**

**Area
Leader
Meetings**

Internet

E-mail

**Speakers'
Corner**



SSF Internal

**Blue
Boards**

Intranet

Web-site



Do you know what to do?











Emergency Awareness Day

Date: 18 May 2001

Time: 10:00 - 17:00

Place: Next to Medforum Clinic

Do you know what to do in an Emergency?

Visit our exhibition and find out

Remember... This knowledge could save your life

INTERESTING EXHIBITIONS:

- Fire
- Drugs
- Vehicles, motorcycles & bicycles
- Cholera
- Sirens & Gas releases
- Poison
- Aids

THINGS TO SEE, TO EAT, TO DO

- Police dog show
- Giant slide
- Food stands
- Emergency vehicle rides
- Free stick Tatoo's
- Free health tests

TIPS FOR BIKERS

HIGHVELD - The following safety and survival tips may appear to be common sense to the experienced motorcyclist, but when you're looking around after a sudden preventable accident, sometimes common sense is nowhere to be found. Don't assume the fellow in front of you has the right line and speed through a turn. Different riders and bikes have different traits. Unless you know the person in front of you like the back of your hand, you should be using your buddy as either a shield or as a shield to him. Drug and stimulants don't work. If you need stimulants to keep you awake, including coffee, tea, or other caffeine shocks, you shouldn't be driving. The right way to pack is as important as what to pack. Make sure that your load is centred, stable and that only the right stuff is loaded.

SIGHT THE SIGNS

HIGHVELD - Parents are often not aware of the fact that their children use drugs or do not know what the signs are to look for. One or more of the following signs could indicate possible drug use:

- * Track or needle marks (usually on the arms, hands, neck or legs).
- * Wearing sunglasses (to conceal dilated, constricted or bloodshot eyes).
- * Wearing long sleeve shirts in warm weather (to hide needle marks) and long stays in the bathroom (possible drug injection).

- * Yawning (withdrawal symptom).
- * Associating with known users (could indicate drug involvement).
- * Teary eyes (withdrawal symptom).
- * Hanging out in known drug locations (could indicate drug involvement).
- * Unnecessary or obvious lying (to cover up drug use).
- * Burns, lesions, sores in the mouth or on lips (smoking of drugs).
- * Burns or scorch marks on nose, lips or

EIEND



Anne-Marie



Tel: (017) 431 491

Op Volkskies

Spieëltjie, Spi
Wie's die flukate eie
Loer maar in by ons alte graag

NEW RELE
EARL

I can stay as I am
and you will still be
quite comfortable

OR



UITSTEKE
VR

Netjiese 2 slaapkamer
Studeerkamer en
Park
Prober
skakel Ann

AS A RESULT C
WE SELL HOUS

The Pax



ESTABLISHED
PORTFOLIO
George 083 2285

Richardt
balenhle

Highveld Ridge Emergency Action Team would like you
Tests on a weekly basis in future - Mondays 18:00.
at the community in the event of any major
Highveld Ridge area - and YOUR role!



- STAY IN - TUNE IN - ALL - CLEAR!!

Warning system

- Switch off Air-Conditioning system.
- Tune your FM radio to 104.9 Mhz - Teles FM for more information.
- Stop at and go inside the nearest shop or public building - do not drive to the affected area.

or flood threats, go and stay indoors.



***Govan Mbeki Community Awareness &
Emergency Response
Task team***

December 2007

Proposed campaign

- Weekly ad Em nr's
- Full page newspaper
- Pamphlets – post, business, posters
- Secunda FM
- Roadside trailer ads
- Electronic board –garage.
- Movie ads
- W+L accounts
- Awareness day
- Ward committees
- Schools – letter?
- Fridge magnets
- Roll ads?
- On site:
- E – mail
- Blue boards

sasol
reaching new frontiers



***Thank you for attending
the industry's involvement
in managing emergencies
presentation***