

FIRE AND RESCUE SERVICE OPERATIONAL STATISTICS BULLETIN FOR ENGLAND AND WALES, 2002/03

Prepared by Statistics and Social Research Branch
Fire & Rescue Service Directorate

INTRODUCTION

This statistical bulletin is a summary document containing the latest statistics relating to the operational issues affecting fire and rescue services in England and Wales, and is broadly based on the information formerly covered in HM Chief Inspector's Annual Report Statistical Annex. It contains information on Staffing and Other Resources, Equality and Diversity, Health and Safety and Special Services. The bulletin is based on annual data as reported by fire and rescue services over two financial years, 1st April 2001 to 31st March 2002 and 1st April 2002 to 31st March 2003.

In addition to this document, the Fire Statistics & Research Division of ODPM published comprehensive performance information in the form of Best Value Performance Indicators in April 2004. These are available electronically at:

http://www.odpm.gov.uk/stellent/groups/odpm_control/documents/contentservertemplate/odpm_index_hcst?n=4519&l=3

Fire statistics, which were published in previous Chief Inspector's Reports are now available in 'Fire Statistics – United Kingdom, 2002'. This was published in April 2004.



Office of the
Deputy Prime Minister

Creating sustainable communities

Mark Jeavons
Higher Statistical Officer
Fire and Rescue Services Directorate
Fire Statistics and Research Division
Zone 18/C Portland House
Stag Place
London SW1E 5LP
020 7944 5480
Mark.Jeavons@odpm.gsi.gov.uk

TABLE OF CONTENTS

Section	Page
SECTION 1: STAFFING AND OTHER RESOURCES	1
▪ Wholetime	1
▪ Retained (part-time)	3
▪ Other staff	4
▪ Successful applicants and leavers – wholetime staff	5
▪ Successful applicants and leavers – retained staff	6
▪ Other resources	7
▪ Staffing and other resources tables	8
SECTION 2: EQUALITY AND DIVERSITY	16
▪ Equality and diversity	16
▪ Equality and diversity tables	17
SECTION 3: HEALTH AND SAFETY	29
▪ Total fire and rescue service injuries	29
▪ Total fire and rescue service injuries by type of activity	31
▪ Health and safety tables	35
SECTION 4: OPERATIONAL ACTIVITIES	43
▪ Fire incidents and special services	43
▪ Control centres	45
▪ Operational activities tables	46
Annex A	48
▪ Targets for Minority Ethnic Recruitment in the Fire Service	48

TABLES AND CHARTS

Table Number	Page
1. Establishment and strength of fire and rescue service staff at 31 st March 2002	8
2. Establishment and strength of fire and rescue service staff at 31 st March 2003	9
3. Number of successful wholetime applicants, retirements, resignations and other leavers in 2001/02	10
4. Number of successful wholetime applicants, retirements, resignations and other leavers in 2002/03	11
5. Number of successful retained staff applicants, retirements, resignations and other leavers in 2001/02	12
6. Number of successful retained staff applicants, retirements, resignations and other leavers in 2002/03	13
7. Fire and rescue service vehicles at 31 st March 2002	14
8. Fire and rescue service vehicles at 31 st March 2003	15
9. Minority ethnic fire and rescue personnel as a percentage	17
10. Women fire and rescue personnel as a percentage	17
11. Ethnic origin of wholetime fire and rescue service staff at 31 st March 2002	18
12. Ethnic origin of control fire and rescue service staff at 31 st March 2002	19
13. Ethnic origin of retained fire and rescue service staff at 31 st March 2002	20
14. Ethnic origin of non-uniformed fire and rescue service staff at 31 st March 2002	21
15. Ethnic origin of wholetime, fire control and non-uniformed fire and rescue service staff in London at 31 st March 2002	22
16. Ethnic origin of wholetime fire and rescue service staff at 31 st March 2003	23
17. Ethnic origin of control fire and rescue service staff at 31 st March 2003	24
18. Ethnic origin of retained fire and rescue service staff at 31 st March 2003	25
19. Ethnic origin of non-uniformed fire and rescue service staff at 31 st March 2003	26
20. Gender of fire and rescue service staff at 31 st March 2002	27
21. Gender of fire and rescue service staff at 31 st March 2003	28
22. Total fire and rescue service injuries 2001/02	35
23. Total fire and rescue service injuries 2002/03	36
24. Fire and rescue service injuries during operational incidents 2001/02	37
25. Fire and rescue service injuries during operational incidents 2002/03	38
26. Fire and rescue service injuries during training for operational incidents 2001/02	39
27. Fire and rescue service injuries during training for operational incidents 2002/03	40
28. Fire and rescue service injuries during routine activities 2001/02	41
29. Fire and rescue service injuries during routine activities 2002/03	42
30. Total incidents attended by fire brigades , 1998-2003	43
31. Number of special service incidents in England and Wales, 2001/02 and 2002/03	45
32. Calls handled per control operator, fires, false alarms and special service incidents, 2001/02	46
33. Calls handled per control operator, fires, false alarms and special service incidents, 2002/03	47

Chart Number	Page
1. Wholetime establishment and strength for England and Wales at 31 st March, 1999-2003	2
2. Year on year changes to wholetime establishment and strength for England and Wales, 2000-2003	2
3. Retained establishment and strength for England and Wales at 31 st March, 1999-2003	3
4. Year on year changes to retained establishment and strength for England and Wales, 2000-2003	4
5. Wholetime successful applicants and leavers in England and Wales, 1998/99-2002/03	5
6. Retained successful applicants and leavers in England and Wales, 1998/99-2002/03	6
7. Fire service appliances in England and Wales, 1999/00-2002/03	7
8. Total injuries during operational incidents in England and Wales, 1998/99-2002/03	30
9. Over 3 day and RIDDOR major injuries during operational incidents in England and Wales, 1998/99-2002/03	30
10. Total injuries in England and Wales, 1998/99 to 2002/03	33
11. Over 3 day injuries in England and Wales by type of activity, 1998/99 to 2002/03	33
12. RIDDOR major injuries in England and Wales by type of activity, 1998/99 to 2002/03	34
13. Special service incidents in England and Wales, 1998/99 to 2002/03	44

SECTION 1: STAFFING AND OTHER RESOURCES

Establishment and strength of local authority fire and rescue services

Tables 1 and 2, at the end of this section, show the establishment and strength of individual local authority fire and rescue services in England and Wales at 31st March 2002 and 31st March 2003 respectively.

Wholetime

The total permanent wholetime establishment of local authority fire and rescue services in England and Wales increased from 33,638 at 31st March 2002 to 33,751 at 31st March 2003, an increase of 113 (0.3%). However, the number of staff in post (i.e. strength) was 33,466 at 31st March 2003, compared with 33,506 at 31st March 2002; a decrease of 40 staff. This decline shows that while more resources to employ full-time staff were made available during 2002/03, the take-up of available posts had decreased by 0.4 percentage points from 99.6% at March 31st 2002 to 99.2% at March 31st 2003.

The trend from 1999 to 2003, in chart 1, shows that the overall pattern for both establishment and strength has remained broadly constant in recent years. Corresponding year on year changes in establishment and strength are shown in chart 2. The establishment and strength figures fell from 1999 to 2000, but have steadily risen from 2000 onwards, with the exception of a slight decrease in strength in 2003.

Chart 1. Wholetime establishment and strength for England and Wales at 31st March 1999-2003

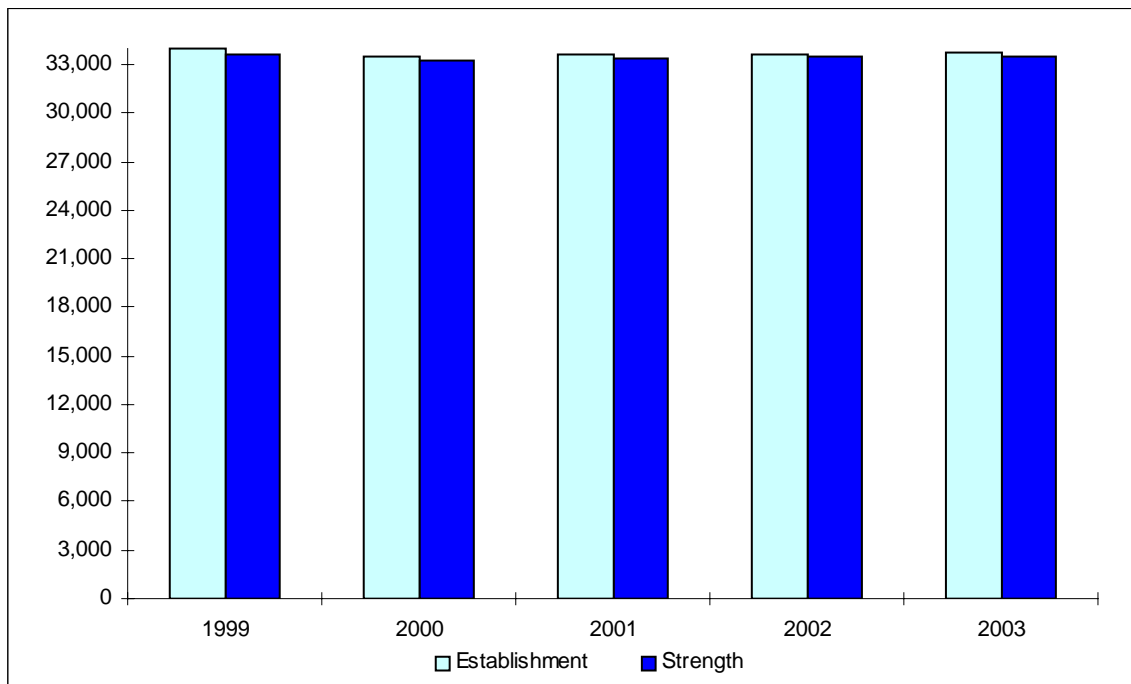
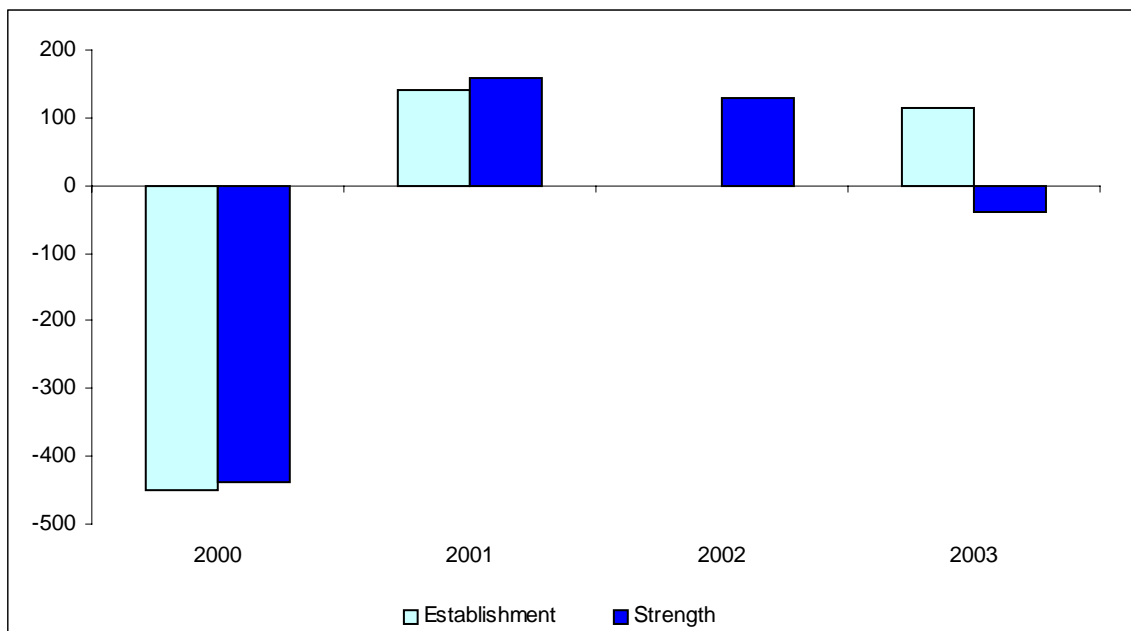


Chart 2. Year on year changes to wholetime establishment and strength for England and Wales, 2000-2003



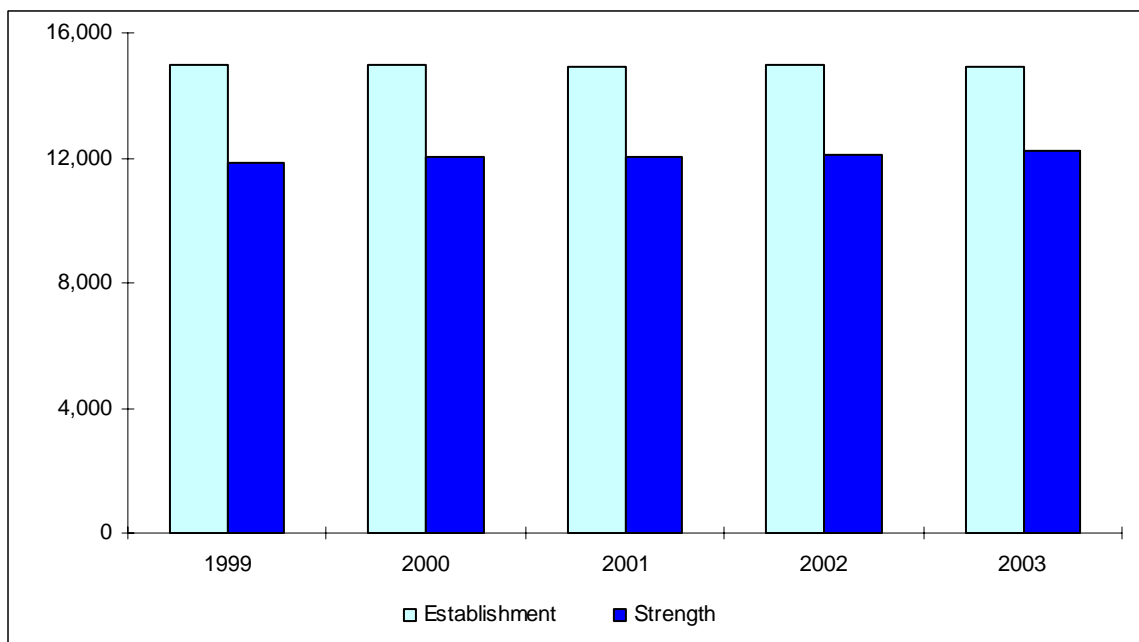
Retained (part-time)

The establishment of retained personnel in local authority fire and rescue services fell from 14,950 at 31st March 2002 to 14,910 at 31st March 2003, a decrease of 40 (0.3%). Strength in 24 hour units of cover rose by 1% to 12,216 (82% of establishment) at 31st March 2003 from 12,111 (81% of establishment) at 31st March 2002, an increase of 105.

The trend in retained establishment and strength since 1999 is shown in chart 3. The overall pattern for both establishment and strength has remained broadly constant in recent years. The chart shows that there is a significant recruitment gap of retained personnel, which has persisted since 1999.

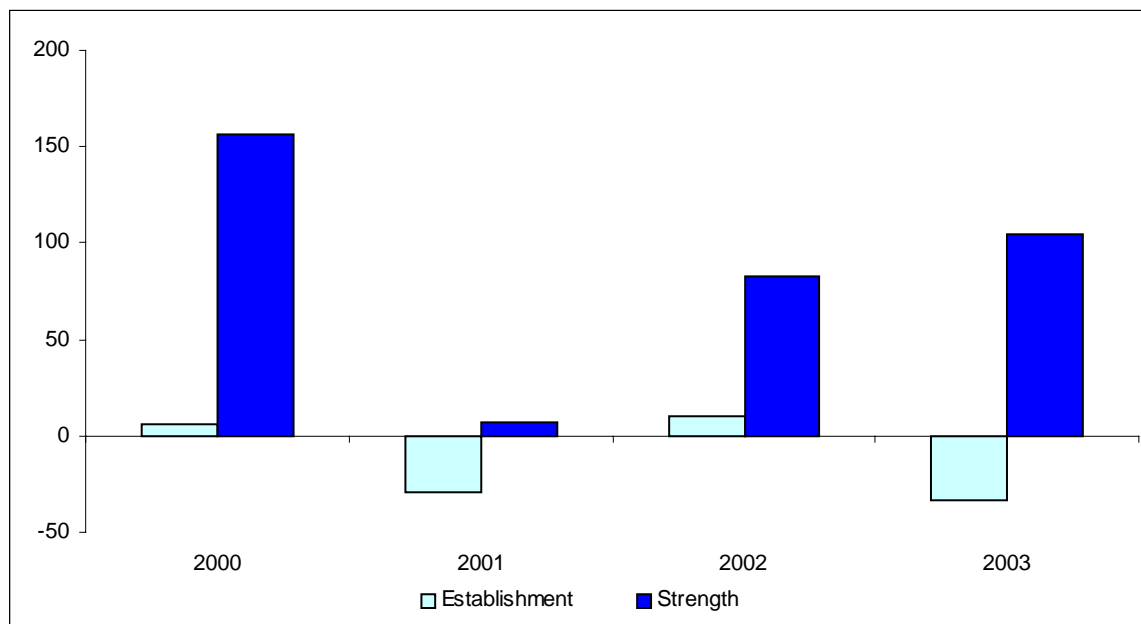
The corresponding year on year changes to retained establishment and strength are shown in chart 4. It shows that the retained strength increased from 1999 to 2003. The magnitude of the increases rose each year from 2001 to 2003.

Chart 3. Retained establishment and strength for England and Wales at 31st March, 1999-2003



Establishment and strength figures are expressed in units of 24-hour cover.

Chart 4. Year on year changes to retained establishment and strength for England and Wales, 2000-2003



Establishment and strength figures are expressed in units of 24-hour cover.

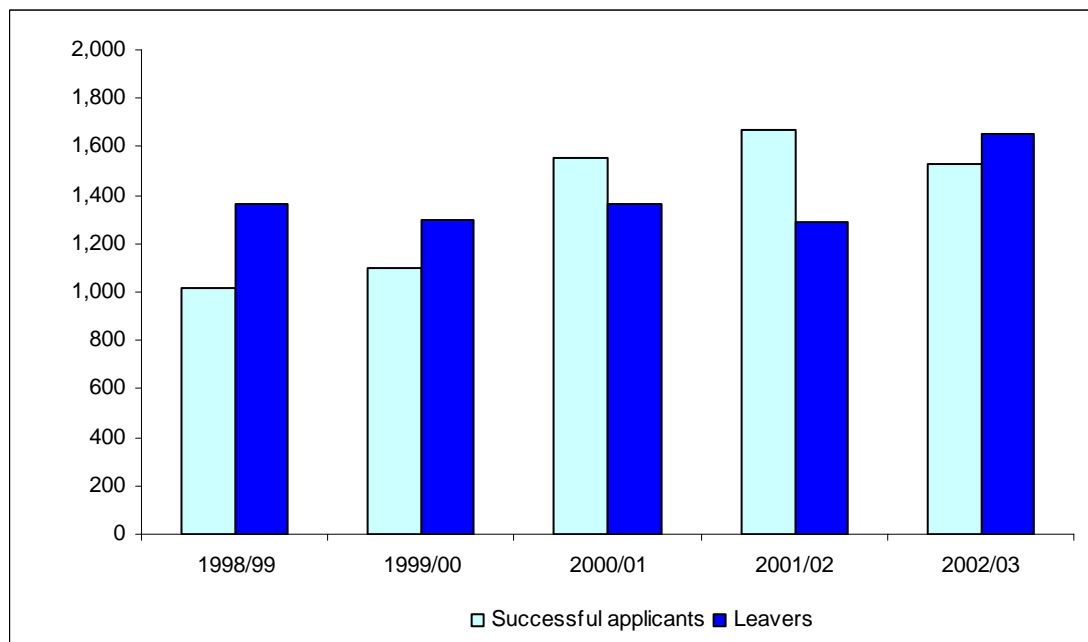
Other Staff

The establishment of control room staff increased from 1,467 at 31st March 2002 to 1,472 at 31st March 2003, an increase of 5 staff. Control room strength at 31st March 2003 was 1,504 compared to 1,497 at 31st March 2002, an increase of 7 staff. Non-uniformed establishment at 31st March 2003 was 6,441 compared to 6,445 at 31st March 2002, a decrease of 4 staff. Non-uniformed strength at 31st March 2003 was 6,216 compared to 6,072 at 31st March 2002, an increase of 144.

Successful applicants and leavers (wholetime firefighters)

A breakdown of successful applicants and leavers figures for wholetime staff is given in tables 3 and 4 at the end of this section. Between 31st March 2002 and 31st March 2003, 1,654 wholetime staff left the fire and rescue service and there were 1,525 successful applicants. In comparison, between 31st March 2001 and 31st March 2002 there were 1,667 successful applicants and 1,293 leavers. Chart 5 displays the trend from April 1998 to March 2003 for successful applicants and leavers. It can be seen that there has been an increase in leavers from 1999/2000 to 2002/2003, although there was a slight decrease in 2001/02. Similarly, the number of new wholetime successful applicants also increased between 1999/2000 and 2001/02, but fell in 2002/03. In 2002/03 leavers exceeded successful applicants for the first time since 1999/2000.

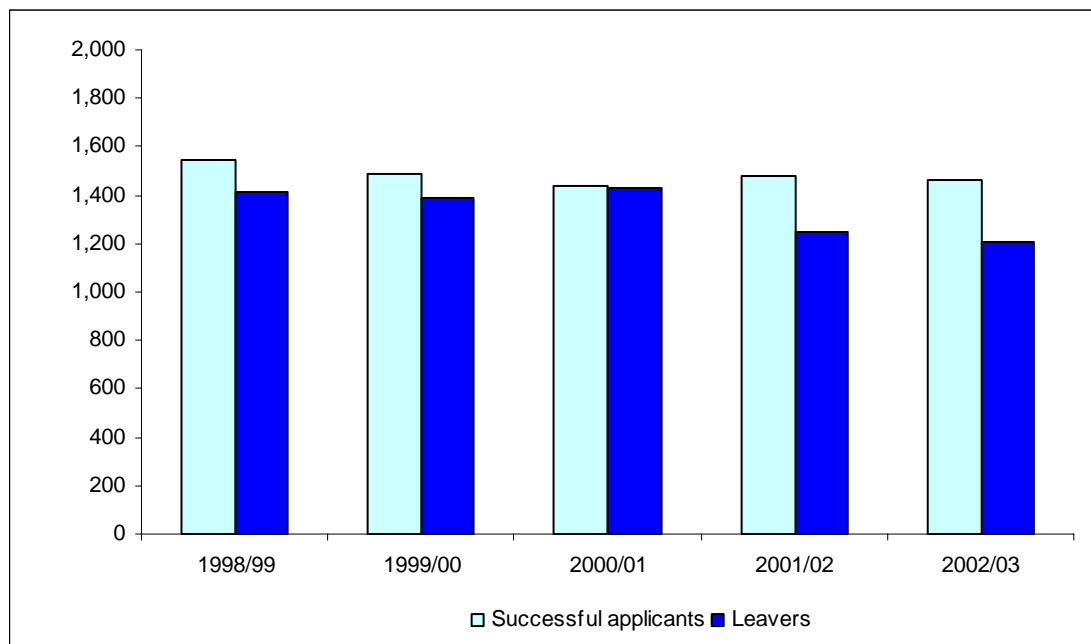
Chart 5. Wholetime successful applicants and leavers in England and Wales, 1998/99-2002/03



Successful applicants and leavers (retained firefighters)

The successful applicants and leavers figures for retained staff are given in tables 5 and 6 at the end of this section. Between 31st March 2002 and 31st March 2003, 1,209 retained staff left the fire and rescue service and 1,462 applicants were successful. Between 31st March 2001 and 31st March 2002 there were 1,476 successful applicants and 1,245 leavers. Chart 6 shows the trend from April 1998 to March 2003 for successful applicants and leavers. The number of successful applications of retained staff remained broadly consistent over the 5-year period, ranging from between 1,462 to 1,543 retained firefighters. In contrast, the leavers decreased over the same period from 1,410 to 1,209, with a slight increase during 2000/01.

Chart 6. Retained successful applicants and leavers in England and Wales, 1998/99-2002/03



Other Resources

Appliances

A breakdown of appliance figures is given in tables 7 and 8 at the end of this section. In 2002/03 there were 2,310 front-line pumping appliances in operation. In addition, there were also 175 front-line aerial appliances and 693 front-line special appliances. The main trends over four years from 1st April 1999 are illustrated below in chart 7. It shows that the number of front-line appliances has remained approximately constant over time.

Chart 7. Front-line fire service appliances in England and Wales, 1999/00-2002/03

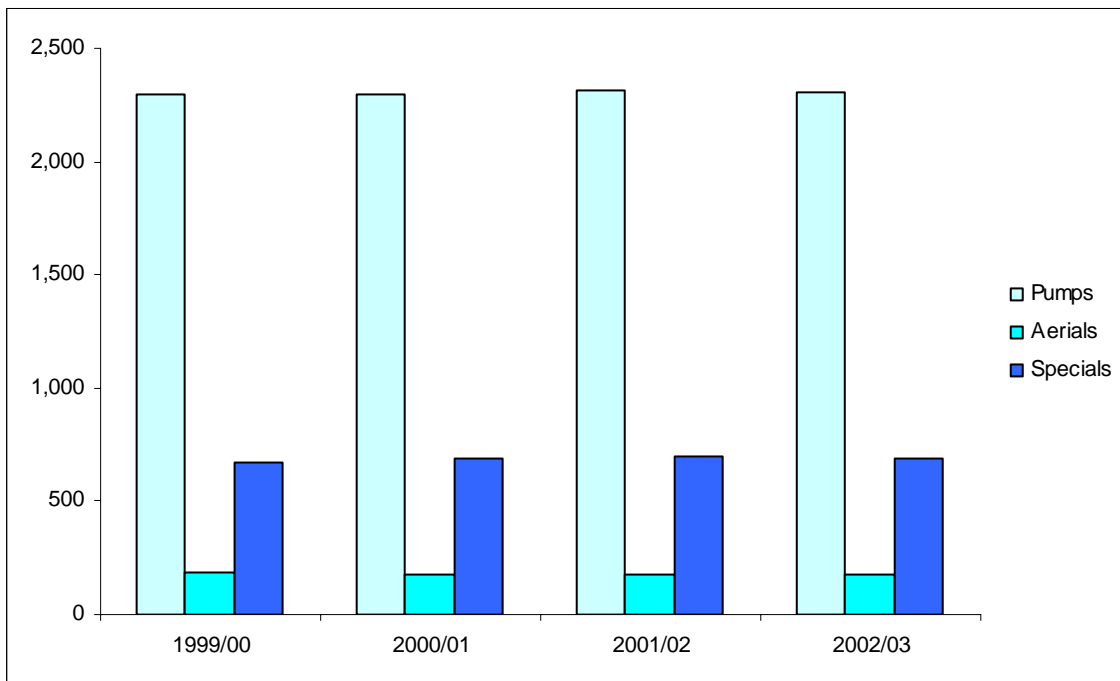


Table 1. Establishment and strength of fire and rescue service staff at 31 March 2002

	Wholetime		Control room		Retained		Non-uniformed	
	Establishment	Strength ¹	Establishment	Strength ¹	Establishment	Strength ²	Establishment	Strength ¹
FCDAs and FEPA³								
Greater Manchester	2,139	2,148	63	66	64	26	340	322
London	5,780	5,913	97	97	0	0	942	799
Merseyside	1,391	1,317	52	54	0	0	275	229
South Yorkshire	928	923	38	40	80	34	143	140
Tyne & Wear	1,007	1,009	38	39	24	18	193	188
West Midlands	2,021	2,028	65	62	10	7	380	345
West Yorkshire	1,698	1,660	54	52	145	160	211	205
TOTAL	14,964	14,998	407	410	323	244	2,484	2,229
ENGLAND								
Avon	668	651	32	34	212	159	96	85
Bedfordshire & Luton	321	324	22	21	161	118	72	70
Buckinghamshire	317	304	22	22	226	143	72	61
Cambridgeshire	271	274	23	23	380	304	115	111
Cheshire	618	626	25	25	182	146	94	102
Cleveland	615	610	26	26	72	66	70	74
Cornwall	181	183	15	15	425	407	70	69
County Durham & Darlington	411	412	26	22	168	151	66	62
Cumbria	281	274	17	18	474	372	72	69
Derbyshire	484	482	27	30	360	226	84	78
Devon	557	538	26	26	756	651	122	121
Dorset	296	298	21	24	356	289	81	80
East Sussex	421	423	25	26	300	197	97	96
Essex	934	948	38	39	430	382	178	164
Gloucestershire	228	226	21	23	304	261	61	62
Hampshire	759	770	32	36	616	567	234	229
Hereford & Worcester	358	352	21	21	369	289	77	72
Hertfordshire	576	570	26	27	276	208	100	124
Humberside	737	720	29	31	328	270	134	102
Isle Of Wight	61	59	12	12	168	148	22	19
Isles Of Scilly ⁴	10	10	0	0	34	33	1	1
Kent	958	951	40	40	714	467	192	185
Lancashire	1,016	1,002	40	41	364	268	170	167
Leicestershire	496	476	26	26	210	139	73	73
Lincolnshire	192	190	25	25	495	420	45	45
Norfolk	307	307	23	23	512	430	88	81
North Yorkshire	362	363	21	21	368	321	75	75
Northamptonshire	297	292	17	21	235	170	54	52
Northumberland	206	208	17	19	155	162	26	25
Nottinghamshire	578	576	26	26	252	205	107	100
Oxfordshire	226	239	18	18	336	232	58	60
Royal Berkshire	423	413	31	31	169	136	85	82
Shropshire	200	206	16	17	284	252	50	49
Somerset	179	181	19	20	390	345	73	73
Staffordshire	489	471	31	31	376	308	127	137
Suffolk	256	252	23	22	426	348	85	81
Surrey	711	686	25	26	144	103	117	100
Warwickshire	294	282	17	17	166	144	59	59
West Sussex	400	393	26	27	398	259	83	83
Wiltshire	223	221	18	21	323	280	72	67
TOTAL	16,917	16,763	944	969	12,914	10,370	3,553	3,441
WALES								
Mid & West Wales	501	499	35	35	713	662	137	129
North Wales	294	289	27	30	553	473	80	80
South Wales	962	957	54	53	447	363	191	194
TOTAL	1,757	1,745	116	118	1,713	1,498	407	403
GRAND TOTAL	33,638	33,506	1,467	1,497	14,950	12,111	6,445	6,072

Notes:

1. In full time equivalents.
 2. In twenty four hour units of cover.
 3. This group contains Fire and Civil Defence Authorities (FCDAs) and London, which is a Fire and Emergency Planning Authority (FEPA).
 4. The control room for the Isles of Scilly is located in Cornwall.
- Figures have been rounded to the nearest whole number, which may affect totals.

Table 2. Establishment and strength of fire and rescue service staff at 31 March 2003

	Wholetime		Control room		Retained		Non-uniformed	
	Establishment	Strength ¹	Establishment	Strength ¹	Establishment	Strength ²	Establishment	Strength ¹
FCDA's and FEPA³								
Greater Manchester	2,140	2,139	63	62	64	21	346	344
London	5,795	5,875	97	102	0	0	824	772
Merseyside	1,361	1,342	50	54	0	0	216	216
South Yorkshire	929	914	38	39	80	38	160	161
Tyne & Wear	1,004	999	38	38	24	18	218	208
West Midlands	2,022	1,971	65	65	10	9	392	361
West Yorkshire	1,698	1,678	54	51	145	156	215	207
TOTAL	14,949	14,918	405	410	323	241	2,371	2,268
ENGLAND								
Avon	668	639	32	33	212	158	110	91
Bedfordshire & Luton	325	319	22	26	139	110	94	89
Buckinghamshire	342	330	21	20	226	145	69	65
Cambridgeshire	277	273	23	24	380	299	116	108
Cheshire	623	623	26	27	171	152	96	109
Cleveland	615	589	26	25	72	69	70	73
Cornwall	206	192	15	16	425	412	76	75
County Durham & Darlington	411	402	26	26	168	149	66	70
Cumbria	282	274	17	17	474	392	69	69
Derbyshire	485	467	28	28	360	208	87	75
Devon	560	565	26	27	759	691	127	125
Dorset	296	304	21	23	356	287	88	89
East Sussex	426	423	25	26	300	229	99	101
Essex	941	932	38	39	430	379	188	178
Gloucestershire	232	233	21	22	304	260	61	63
Hampshire	785	799	36	38	624	556	234	220
Hereford & Worcester	359	351	21	21	369	297	90	77
Hertfordshire	576	564	28	24	276	195	100	103
Humberside	737	721	29	29	328	276	111	103
Isle Of Wight	63	61	12	13	168	163	23	21
Isles Of Scilly ⁴	11	10	0	0	37	37	1	1
Kent	958	938	40	43	714	455	198	189
Lancashire	1,015	1,008	44	43	340	288	163	161
Leicestershire	496	472	26	28	216	132	82	86
Lincolnshire	192	188	23	23	497	422	47	47
Norfolk	307	288	23	26	512	443	88	83
North Yorkshire	362	351	22	23	368	340	79	79
Northamptonshire	297	307	17	20	235	170	55	57
Northumberland	206	204	17	19	155	154	32	32
Nottinghamshire	577	589	26	26	252	203	112	102
Oxfordshire	238	233	18	19	336	218	58	64
Royal Berkshire	425	436	27	30	169	131	85	84
Shropshire	209	216	16	17	284	246	49	47
Somerset	180	181	19	18	390	333	75	75
Staffordshire	479	471	31	29	378	324	135	130
Suffolk	253	248	23	24	426	359	85	81
Surrey	710	693	25	25	144	103	121	110
Warwickshire	295	279	17	17	166	153	65	65
West Sussex	401	387	26	26	398	269	87	77
Wiltshire	225	221	18	20	316	271	71	67
TOTAL	17,045	16,781	950	978	12,874	10,474	3,658	3,539
WALES								
Mid & West Wales	501	498	36	36	713	672	137	130
North Wales	294	300	27	27	553	463	84	84
South Wales	962	969	54	53	447	365	191	195
TOTAL	1,757	1,767	117	116	1,713	1,500	411	409
GRAND TOTAL	33,751	33,466	1,472	1,504	14,910	12,216	6,441	6,216

Notes:

1. In full time equivalents.

2. In twenty four hour units of cover.

3. This group contains Fire and Civil Defence Authorities (FCDAs) and London, which is a Fire and Emergency Planning Authority (FEPA).

4. The control room for the Isles of Scilly is located in Cornwall.

Figures have been rounded to the nearest whole number, which may affect totals.

**Table 3. Number of successful applicants, retirements, resignations and other leavers in 2001/02
Wholetime members (excluding control staff) of local authority fire and rescue services**

	Successful applicants	Left the service								
		Dismissal on disciplinary grounds	Medical discharge due to harassment or discrimination	Resignation due to harassment or discrimination	Medical discharge for other reasons	Poor performance/efficiency	Resignation to take other employment	Compulsory/voluntary age retirement	Deceased	Other reasons
FCDAs and FEPA³										
Greater Manchester	127	0	0	0	32	0	14	32	2	0
London ²	349									
Merseyside	28	1	0	0	7	0	9	37	1	0
South Yorkshire	42	0	0	0	0	1	0	26	1	3
Tyne & Wear	102	0	0	0	32	1	2	14	1	2
West Midlands	95	1	0	0	37	3	5	42	2	16
West Yorkshire	78	0	0	0	25	3	2	52	1	24
TOTAL	821	2	0	0	133	8	32	203	8	45
ENGLAND										
Avon	17	0	0	0	15	0	0	17	0	0
Bedfordshire & Luton	25	0	0	0	9	0	10	6	0	0
Buckinghamshire	18	0	0	0	8	0	0	3	0	0
Cambridgeshire	43	0	0	0	9	0	0	6	0	0
Cheshire	26	0	0	0	10	0	0	17	0	0
Cleveland ¹	0	0	0	0	13	0	0	10	0	0
Cornwall	32	0	0	0	4	0	0	7	0	0
County Durham & Darlington ¹	0	0	0	0	5	0	0	10	1	0
Cumbria	14	0	0	0	5	0	0	7	0	0
Derbyshire	18	0	0	0	12	0	0	8	0	0
Devon	0	0	0	0	8	0	0	26	1	0
Dorset	76	0	0	0	5	0	0	12	0	0
East Sussex	0	0	0	0	3	0	11	11	0	1
Essex	45	0	0	0	16	0	0	11	1	2
Gloucestershire	0	0	0	0	1	0	0	8	0	0
Hampshire	0	0	0	0	16	0	3	32	0	5
Hereford & Worcester	14	0	0	0	6	0	0	7	0	2
Hertfordshire	33	1	0	0	5	1	13	8	0	0
Humberside	0	0	0	0	8	0	0	14	0	0
Isle Of Wight	0	0	0	0	2	0	0	0	0	0
Isles Of Scilly	2	0	0	0	0	0	0	0	0	0
Kent	30	0	0	0	14	0	2	16	0	2
Lancashire	N/Av	0	0	0	14	2	6	17	0	0
Leicestershire	47	0	0	0	6	0	0	10	0	1
Lincolnshire	8	0	0	0	1	0	0	2	0	1
Norfolk	0	0	0	0	5	0	0	7	0	1
North Yorkshire	0	0	0	0	10	0	4	2	0	2
Northamptonshire	0	0	0	0	6	0	5	9	0	6
Northumberland ¹	0	0	0	0	2	0	4	4	0	1
Nottinghamshire	25	0	0	0	13	1	2	17	0	3
Oxfordshire	0	0	0	0	3	0	0	2	0	1
Royal Berkshire	16	0	0	0	1	0	11	10	0	6
Shropshire	10	0	0	0	3	0	1	1	0	0
Somerset	0	0	0	0	1	0	0	5	0	1
Staffordshire	49	0	0	0	6	0	9	4	0	0
Suffolk	34	0	0	0	5	3	12	0	0	0
Surrey	18	1	0	0	17	0	17	15	0	0
Warwickshire	10	0	0	0	6	0	0	4	0	0
West Sussex	76	0	0	0	4	0	0	8	0	8
Wiltshire	23	0	0	0	4	0	2	7	0	1
TOTAL	709	2	0	0	281	7	112	360	3	44
WALES										
Mid & West Wales	82	0	0	0	4	0	0	10	0	0
North Wales	0	0	0	0	3	0	1	8	0	1
South Wales	55	0	0	0	15	0	0	11	0	0
TOTAL	137	0	0	0	22	0	1	29	0	1
GRAND TOTAL	1,667	4	0	0	436	15	145	592	11	90

Notes:

1. Successful applicant figures included with those for Tyne & Wear.
2. The 249 wholetime members leaving London Fire Brigade could not be broken down.
3. This group contains Fire and Civil Defence Authorities (FCDAs) and London, which is a Fire and Emergency Planning Authority (FEPA).

**Table 4. Number of successful applicants, retirements, resignations and other leavers in 2002/03
Wholtime members (excluding control staff) of local authority fire and rescue services**

	Successful applicants	Left the service								
		Dismissal on disciplinary grounds	Medical discharge due to harassment or discrimination	Resignation due to harassment or discrimination	Medical discharge for other reasons	Poor performance/efficiency	Resignation to take other employment	Compulsory/voluntary age retirement	Deceased	Other reasons
FCDAs and FEPA²										
Greater Manchester	106	1	0	0	23	0	7	70	3	6
London	163	3	0	0	166	0	32	74	6	0
Merseyside	28	0	0	0	17	0	3	30	0	1
South Yorkshire	54	0	0	0	12	1	3	29	2	1
Tyne & Wear	113	1	0	0	25	2	2	16	0	3
West Midlands	47	2	0	0	37	1	5	50	2	4
West Yorkshire	14	0	0	0	26	3	4	51	0	0
TOTAL	525	7	0	0	306	7	56	320	13	15
ENGLAND										
Avon	21	0	0	0	10	0	9	16	1	0
Bedfordshire & Luton	34	0	0	0	6	0	11	4	0	0
Buckinghamshire	35	0	0	0	6	0	2	3	0	0
Cambridgeshire	19	0	0	0	4	0	0	3	0	4
Cheshire	10	0	0	0	4	0	0	15	0	3
Cleveland ¹	0	0	0	0	17	2	0	21	0	1
Cornwall	26	0	0	0	2	0	1	4	0	0
County Durham & Darlington ¹	0	0	0	0	5	0	1	6	0	0
Cumbria	8	0	0	0	3	0	1	6	0	0
Derbyshire	6	0	0	0	7	0	3	13	0	4
Devon	16	0	0	0	11	0	1	23	1	0
Dorset	0	1	0	0	4	2	0	9	0	0
East Sussex	35	0	0	0	10	0	0	16	1	0
Essex	32	0	0	0	18	0	13	14	2	0
Gloucestershire	13	0	0	0	1	0	2	3	0	1
Hampshire	71	0	0	0	6	6	0	37	0	9
Hereford & Worcester	15	0	0	0	6	0	1	4	0	0
Hertfordshire	29	0	0	0	2	0	19	16	1	0
Humberside	213	0	0	0	8	1	3	12	0	0
Isle Of Wight	12	0	0	0	1	0	0	0	0	0
Isles Of Scilly	0	0	0	0	0	0	0	1	0	0
Kent	40	1	0	0	17	0	6	13	0	0
Lancashire	39	0	0	0	9	0	5	22	0	0
Leicestershire	0	0	0	0	8	0	1	20	1	0
Lincolnshire	36	0	0	0	1	0	0	5	0	0
Norfolk	25	0	0	0	5	0	1	12	0	0
North Yorkshire	0	0	0	0	11	0	0	16	0	0
Northamptonshire	25	0	0	0	3	0	0	8	0	0
Northumberland ¹	0	0	0	0	0	0	0	8	0	1
Nottinghamshire	34	0	0	0	6	0	2	14	1	4
Oxfordshire	45	0	0	0	4	0	0	4	0	4
Royal Berkshire	16	0	0	0	4	1	5	9	0	9
Shropshire	0	0	0	0	4	0	0	1	0	0
Somerset	0	0	0	0	3	0	0	4	0	0
Staffordshire	28	0	0	0	4	0	5	7	0	0
Suffolk	34	0	0	0	5	0	2	7	0	0
Surrey	29	1	0	0	7	0	6	20	0	15
Warwickshire	18	0	0	0	9	0	0	4	0	0
West Sussex	0	0	0	0	7	0	3	13	0	9
Wiltshire	0	0	0	0	0	0	1	6	0	0
TOTAL	964	3	0	0	238	12	104	419	8	64
WALES										
Mid & West Wales	0	0	0	0	4	0	0	13	1	0
North Wales	20	0	0	0	0	0	1	9	0	11
South Wales	16	0	0	0	14	0	2	23	1	3
TOTAL	36	0	0	0	18	0	3	45	2	14
GRAND TOTAL	1,525	10	0	0	562	19	163	784	23	93

Notes:

1. Successful applicant figures included with those for Tyne & Wear.

2. This group contains Fire and Civil Defence Authorities (FCDAs) and London, which is a Fire and Emergency Planning Authority (FEPA).

Table 5. Number of successful applicants, retirements, resignations and other leavers in 2001/02 Retained members (excluding control staff) of local authority fire and rescue services

	Successful applicants	Dismissal on disciplinary grounds	Medical discharge due to harassment or discrimination	Resignation due to harassment or discrimination	Medical discharge for other reasons	Poor performance/efficiency	Resignation to take other employment	Compulsory/voluntary age retirement	Deceased	Other reasons
FCDAs and FEPA³										
Greater Manchester	13	1	0	0	0	0	10	0	0	0
London	0									
Merseyside	0	0	0	0	0	0	0	0	0	0
South Yorkshire	7	0	0	0	0	0	8	0	0	4
Tyne & Wear	7	0	0	0	0	0	1	1	0	3
West Midlands	0	0	0	0	0	0	1	0	0	0
West Yorkshire	12	1	0	0	0	0	2	1	0	16
TOTAL	39	2	0	0	0	0	22	2	0	23
ENGLAND										
Avon	20	0	0	0	0	0	4	7	0	1
Bedfordshire & Luton	30	0	0	0	0	0	18	1	0	0
Buckinghamshire	22	0	0	0	1	0	4	2	0	17
Cambridgeshire	52	0	0	0	2	0	1	5	0	7
Cheshire	22	0	0	0	0	0	12	1	0	0
Cleveland	6	0	0	0	0	0	2	3	1	0
Cornwall	36	0	0	0	3	1	20	9	0	4
County Durham & Darlington	25	0	0	0	0	0	1	3	0	6
Cumbria	40	0	0	0	2	1	5	8	0	11
Derbyshire	34	0	0	0	5	0	2	3	1	24
Devon	0	1	0	0	5	0	4	16	1	31
Dorset	32	0	0	0	2	0	0	10	0	9
East Sussex	10	0	0	0	1	0	18	4	1	1
Essex	66	0	0	0	0	0	11	10	1	25
Gloucestershire	10	0	0	0	1	1	2	7	0	10
Hampshire	82	0	0	0	2	4	4	15	0	30
Hereford & Worcester	34	0	0	0	2	3	7	3	0	10
Hertfordshire	14	0	0	0	2	0	21	3	0	0
Humberside	31	0	0	0	8	0	31	0	0	1
Isle Of Wight	23	0	0	0	2	2	3	2	0	10
Isles Of Scilly	1	0	0	0	0	0	0	0	0	0
Kent	65	0	0	0	3	0	11	9	0	36
Lancashire	34	0	0	0	2	1	24	9	0	8
Leicestershire	17	0	0	0	0	0	0	9	0	0
Lincolnshire	81	0	0	0	0	2	3	5	0	19
Norfolk	41	0	0	0	5	0	2	13	4	12
North Yorkshire	44	0	0	0	1	0	29	8	1	16
Northamptonshire	3	0	0	0	0	0	0	0	0	0
Northumberland	23	0	0	0	0	0	8	7	1	9
Nottinghamshire	46	2	0	0	1	0	30	2	0	0
Oxfordshire	28	0	0	0	0	0	7	6	0	20
Royal Berkshire	26	0	0	0	0	0	7	0	1	2
Shropshire	26	0	0	0	1	1	3	1	0	7
Somerset	13	0	0	0	1	1	2	9	0	5
Staffordshire	69	3	0	0	1	1	20	12	0	28
Suffolk	36	0	0	0	3	2	0	11	1	0
Surrey	13	0	0	0	0	0	0	2	0	11
Warwickshire	33	0	0	0	1	0	5	5	0	5
West Sussex	27	0	0	0	1	0	0	6	1	0
Wiltshire	31	1	0	0	1	0	4	4	0	27
TOTAL	1246	7	0	0	59	20	325	230	14	402
WALES										
Mid & West Wales	58	0	0	0	3	2	6	15	0	26
North Wales	84	0	0	0	5	8	15	8	0	25
South Wales	49	0	0	0	1	0	4	7	1	13
TOTAL	191	0	0	0	9	10	25	30	1	64
GRAND TOTAL	1476	9	0	0	68	30	372	262	15	489

Notes:

1. Successful applicant figures included with those for Tyne & Wear.
2. The 349 wholetime members leaving the London Fire and Rescue Service could not be broken down.
3. This group contains Fire and Civil Defence Authorities (FCDAs) and London, which is a Fire and Emergency Planning Authority (FEPA).

**Table 6. Number of successful applicants, retirements, resignations and other leavers in 2002/03
Retained members (excluding control staff) of local authority fire and rescue services**

	Successful applicants	Dismissal on disciplinary grounds	Medical discharge due to harassment or discrimination	Resignation due to harassment or discrimination	Medical discharge for other reasons	Poor performance/efficiency	Resignation to take other employment	Compulsory/voluntary age retirement	Deceased	Other reasons
FCDAs and FEPA²										
Greater Manchester	2	0	0	0	1	0	0	1	0	0
London	0	0	0	0	0	0	0	0	0	0
Merseyside	0	0	0	0	0	0	0	0	0	0
South Yorkshire	4	0	0	0	0	0	1	1	0	3
Tyne & Wear	2	0	0	0	1	0	0	0	0	0
West Midlands	2	0	0	0	0	0	0	0	0	0
West Yorkshire	4	0	0	0	0	0	0	2	0	0
TOTAL	14	0	0	0	2	0	1	4	0	3
ENGLAND										
Avon	18	0	0	0	1	0	5	10	0	2
Bedfordshire & Luton	18	0	0	0	0	0	12	2	0	0
Buckinghamshire	23	0	0	0	0	0	2	2	0	6
Cambridgeshire	34	1	0	0	0	0	0	4	0	9
Cheshire	22	0	0	0	0	0	2	2	0	6
Cleveland	11	0	0	0	0	1	0	5	0	0
Cornwall	23	0	0	0	0	0	0	8	0	8
County Durham & Darlington	20	0	0	0	1	0	0	2	0	15
Cumbria	37	0	0	0	0	1	6	10	0	11
Derbyshire	37	0	0	0	4	0	2	9	0	17
Devon	110	0	0	0	2	0	8	17	0	51
Dorset	32	1	0	0	2	1	0	6	0	14
East Sussex	5	0	0	0	1	0	25	0	0	0
Essex	35	1	0	0	3	1	3	11	0	21
Gloucestershire	19	0	0	0	0	0	3	6	0	5
Hampshire	58	0	0	1	5	10	6	0	11	47
Hereford & Worcester	40	0	0	0	2	0	8	2	1	9
Hertfordshire	10	0	0	0	0	0	21	3	1	6
Humberside	39	0	0	0	0	3	32	3	1	0
Isle Of Wight	24	0	0	0	1	1	2	2	0	4
Isles Of Scilly	3	0	0	0	0	0	0	3	0	0
Kent	94	0	0	0	3	0	24	10	1	40
Lancashire	40	1	0	0	2	0	38	3	0	0
Leicestershire	24	0	0	0	1	0	13	7	0	0
Lincolnshire	31	0	0	0	0	0	5	5	0	12
Norfolk	56	1	0	0	1	0	6	5	0	28
North Yorkshire	36	0	0	0	0	0	0	6	0	18
Northamptonshire	23	0	0	0	0	0	0	1	0	5
Northumberland	14	0	0	0	1	0	10	6	0	9
Nottinghamshire	39	1	0	0	0	0	8	8	0	21
Oxfordshire	29	0	0	0	2	0	5	0	0	31
Royal Berkshire	15	1	0	0	1	0	5	1	0	5
Shropshire	25	1	0	0	0	0	3	3	0	9
Somerset	9	0	0	0	1	1	3	5	0	5
Staffordshire	63	0	0	1	0	1	10	1	0	23
Suffolk	45	1	0	0	2	1	24	3	0	0
Surrey	12	1	0	0	0	0	1	1	0	5
Warwickshire	25	0	0	0	1	1	1	2	0	4
West Sussex	36	0	0	0	2	0	3	5	0	0
Wiltshire	27	0	0	0	1	0	2	5	0	24
TOTAL	1261	10	0	2	40	22	298	184	15	470
WALES										
Mid & West Wales	64	1	0	0	3	1	7	14	0	23
North Wales	62	1	0	0	7	12	7	14	0	20
South Wales	61	5	0	0	4	10	5	5	0	19
TOTAL	187	7	0	0	14	23	19	33	0	62
GRAND TOTAL	1462	17	0	2	56	45	318	221	15	535

Notes:

1. Successful applicant figures included with those for Tyne & Wear.
2. This group contains Fire and Civil Defence Authorities (FCDAs) and London, which is a Fire and Emergency Planning Authority (FEPA).

Table 7. Fire and rescue service vehicles at 31 March 2002

	Front-line appliances			Reserve appliances		
	Front-line pumping appliances	Front-line aerial appliances	Front-line special appliances	Reserve pumps	Reserve aerials	Reserve specials
FCDAs and FEPA¹						
Greater Manchester	67	9	20	14	5	3
London	185	16	29	0	0	0
Merseyside	42	5	7	7	0	1
South Yorkshire	33	3	7	6	1	1
Tyne & Wear	33	3	6	7	0	2
West Midlands	62	8	5	14	2	3
West Yorkshire	65	7	7	10	1	1
TOTAL	487	51	81	58	9	11
ENGLAND						
Avon	37	6	15	8	0	0
Bedfordshire & Luton	22	2	17	3	0	0
Buckinghamshire	31	2	6	4	0	0
Cambridgeshire	38	2	10	8	0	1
Cheshire	37	3	19	5	0	0
Cleveland	23	2	5	3	0	0
Cornwall	43	2	32	8	0	2
County Durham & Darlington	27	2	4	4	0	0
Cumbria	50	3	13	6	0	1
Derbyshire	44	3	10	6	0	0
Devon	81	5	16	8	0	1
Dorset	41	2	24	6	1	0
East Sussex	38	4	11	9	1	0
Essex	75	5	10	14	0	3
Gloucestershire	33	2	11	5	0	0
Hampshire	76	3	34	14	0	1
Hereford & Worcester	43	3	15	6	0	0
Hertfordshire	43	3	6	6	0	1
Humberside	50	6	6	9	0	0
Isle Of Wight	16	2	6	3	0	0
Isles Of Scilly	2	0	6	0	0	1
Kent	87	7	16	13	1	3
Lancashire	63	5	12	7	1	1
Leicestershire	33	2	11	4	0	0
Lincolnshire	48	3	7	4	0	0
Norfolk	52	3	9	10	0	0
North Yorkshire	45	3	18	5	1	0
Northamptonshire	28	2	7	4	0	0
Northumberland	23	0	0	3	0	0
Nottinghamshire	36	2	7	9	1	3
Oxfordshire	37	1	8	6	1	0
Royal Berkshire	24	2	10	6	0	1
Shropshire	33	2	14	3	0	1
Somerset	40	3	14	5	0	0
Staffordshire	48	4	13	7	0	0
Suffolk	47	2	16	4	0	0
Surrey	36	3	17	9	0	0
Warwickshire	26	2	4	4	0	1
West Sussex	46	2	28	10	0	1
Wiltshire	35	3	15	6	0	0
TOTAL	1,637	113	502	254	7	22
WALES						
Mid & West Wales	72	4	42	12	0	0
North Wales	54	4	27	9	0	1
South Wales	64	5	48	12	1	1
TOTAL	190	13	117	33	1	2
GRAND TOTAL	2,314	177	700	345	17	35

Notes:

1. This group contains Fire and Civil Defence Authorities (FCDAs) and London, which is a Fire and Emergency Planning Authority (FEPA).

Table 8. Fire and rescue service vehicles at 31 March 2003

	Front-line appliances			Reserve appliances		
	Front-line pumping appliances	Front-line aerial appliances	Front-line special appliances	Reserve pumps	Reserve aerials	Reserve specials
FCDAs and FEPA¹						
Greater Manchester	67	9	17	14	4	3
London	185	16	33	0	0	0
Merseyside	42	5	7	7	0	1
South Yorkshire	33	3	7	5	1	1
Tyne & Wear	33	3	6	7	0	1
West Midlands	62	8	5	13	2	3
West Yorkshire	65	7	7	14	2	1
TOTAL	487	51	82	60	9	10
ENGLAND						
Avon	37	6	18	8	0	0
Bedfordshire & Luton	22	2	15	4	0	0
Buckinghamshire	31	2	7	2	0	0
Cambridgeshire	38	2	9	8	0	1
Cheshire	37	3	17	7	0	0
Cleveland	23	2	5	3	0	0
Cornwall	43	2	30	9	0	3
County Durham & Darlington	27	2	7	3	0	0
Cumbria	50	3	13	6	0	1
Derbyshire	44	3	10	6	0	0
Devon	81	5	20	11	0	1
Dorset	41	2	24	6	1	0
East Sussex	38	4	9	7	1	0
Essex	72	5	12	15	0	3
Gloucestershire	33	2	14	6	0	0
Hampshire	76	3	34	13	0	1
Hereford & Worcester	43	3	14	8	0	0
Hertfordshire	43	3	5	6	0	1
Humberside	50	6	6	9	0	0
Isle Of Wight	16	2	6	2	0	0
Isles Of Scilly	2	0	5	1	0	0
Kent	87	7	17	13	1	2
Lancashire	63	5	12	7	0	1
Leicestershire	33	2	12	6	0	0
Lincolnshire	48	3	8	4	0	0
Norfolk	52	3	10	8	0	0
North Yorkshire	45	3	18	5	1	0
Northamptonshire	28	2	6	5	0	0
Northumberland	24	0	0	3	0	0
Nottinghamshire	36	2	7	6	1	1
Oxfordshire	35	1	7	6	1	0
Royal Berkshire	24	2	5	6	0	1
Shropshire	33	2	11	4	0	3
Somerset	40	3	18	0	0	0
Staffordshire	48	4	13	11	0	0
Suffolk	47	2	12	4	0	0
Surrey	36	3	19	12	0	0
Warwickshire	26	1	6	5	0	1
West Sussex	46	2	28	10	0	1
Wiltshire	35	2	13	6	0	0
TOTAL	1,633	111	502	261	6	21
WALES						
Mid & West Wales	72	4	33	12	0	0
North Wales	54	4	27	9	0	0
South Wales	64	5	49	19	1	1
TOTAL	190	13	109	40	1	1
GRAND TOTAL	2,310	175	693	361	16	32

Notes:

1. This group contains Fire and Civil Defence Authorities (FCDAs) and London, which is a Fire and Emergency Planning Authority (FEPA).

SECTION 2: EQUALITY AND DIVERSITY

The Fire and Rescue Service does not currently represent the community it serves. At 31st March 2003 only 2.1% of firefighters were women. Ethnic minority staff made up just 2.2% of the workforce. More flexible patterns of working should help improve this position, but they will not in themselves be sufficient.

The Service must improve its performance as inherited targets set by the Home Office aim to achieve 7% ethnic minority representation among operational and non-operational staff by April 2009 and 15% for female operational staff by the same date. Working with partners, ODPM will support a strategy on equality and diversity that will include:

- the dissemination and integration of the core values developed for and by the Fire and Rescue Service;
- ODPM benchmarking of fire and rescue services' achievement on equality and diversity issues against the Local Government Equality Standard by March 2005;
- reviewing equality training and the role of equality advisers by March 2005, and disseminating good practice;
- a review of national recruitment, progression and retention targets for ethnic minorities and women by March 2005 and
- a programme of peer review on equality issues, both between Fire and Rescue Authorities and other sectors and local government services.

A full breakdown of fire and rescue service staff by ethnicity for 2001/02 and 2002/03 is shown in tables 11-19 at the end of this section; the 'Don't Know' category contains the number of people where ethnic origin is not known, due to a lack of information. The tables use a 5 + 1 classification rather than a 16 + 1 classification for ease of presentation. A full 16 + 1 ethnic classification breakdown for staff in the fire and rescue service is available on request. Similarly, a full breakdown of fire and rescue service staff by gender for 2001/02 and 2002/03 is shown in tables 20 and 21 at the end of this section.

Target milestones for ethnic minority recruitment were not met for 2002¹. However, table 9 shows that minority ethnic representation increased in 2002/03 for every duty system with the exception of retained personnel. These figures are conservative.²

Table 9. Minority ethnic representation as a percentage of fire and rescue personnel at 31 March

	2002	2003
Wholetime	1.9%	2.4%
Retained	0.4%	0.4%
Fire Control	0.8%	1.0%
Non-Uniformed	4.6%	4.8%

The representation of women in the operational sector (wholetime and retained combined) as a percentage of the workforce increased from 1.7% in 2001/02 to 2.1% in 2002/03. The Service will aim to continue increasing the proportion of women in operational roles to 15% by April 2009; the target set originally by the Home Office.

Table 10. Women as a percentage of fire and rescue personnel at 31 March

	2002	2003
Wholetime	1.3%	1.7%
Retained	2.5%	2.9%
Fire Control	79.6%	79.8%
Non-Uniformed	59.0%	58.6%

¹ See annex A for minority ethnic recruitment targets.

² In 2002, the percentage of staff with unknown ethnicity was approximately 2% for wholetime, fire control and non-uniform staff and 5% for retained staff. This rose in 2003 to 4% for wholetime, fire control and non-uniformed staff and 8% for retained staff. For statistical purposes individuals with unknown ethnicity are classified as white.

Table 11. Ethnic origin of wholetime fire and rescue service staff at 31 March 2002

	White	Mixed	Asian or Asian British	Black or Black British	Chinese or Other Ethnic Group	Don't know ³	Total
FCDAs and FEPA²							
Greater Manchester London ¹	2,125	0	3	18	2	0	2,148
Merseyside	1,311	0	0	5	1	0	1,317
South Yorkshire	906	5	0	7	5	0	923
Tyne & Wear	1,004	3	1	1	0	0	1,009
West Midlands	1,948	2	6	50	22	0	2,028
West Yorkshire	1,639	0	10	7	4	0	1,660
TOTAL	8,933	10	20	88	34	0	9,085
ENGLAND							
Avon	643	3	0	5	0	0	651
Bedfordshire & Luton	325	5	1	3	0	0	334
Buckinghamshire	301	0	0	3	0	0	304
Cambridgeshire	262	5	1	3	1	2	274
Cheshire	622	0	1	3	0	0	626
Cleveland	606	1	3	0	0	0	610
Cornwall	182	1	0	0	0	0	183
County Durham & Darlington	410	0	0	2	0	0	412
Cumbria	274	0	0	0	0	0	274
Derbyshire	476	0	2	3	1	0	482
Devon	536	0	0	2	0	0	538
Dorset	294	0	1	0	2	1	298
East Sussex	417	2	2	1	1	0	423
Essex	938	5	2	3	0	0	948
Gloucestershire	217	0	1	6	2	0	226
Hampshire	769	0	0	1	0	0	770
Hereford & Worcester	347	2	0	2	1	0	352
Hertfordshire	468	5	0	1	0	96	570
Humberside	710	8	0	2	0	0	720
Isle Of Wight	59	0	0	0	0	0	59
Isles Of Scilly	10	0	0	0	0	0	10
Kent	885	1	3	2	0	60	951
Lancashire	998	0	1	3	0	0	1,002
Leicestershire	468	0	4	4	0	0	476
Lincolnshire	185	2	0	0	0	0	187
Norfolk	18	0	0	4	0	286	308
North Yorkshire	362	0	2	0	0	0	364
Northamptonshire	287	0	0	1	4	0	292
Northumberland	208	0	0	0	0	0	208
Nottinghamshire	566	0	3	7	0	0	576
Oxfordshire	231	0	0	0	0	0	231
Royal Berkshire	377	0	2	2	3	13	397
Shropshire	204	1	0	1	0	0	206
Somerset	180	0	0	1	0	0	181
Staffordshire	459	2	1	8	0	1	471
Suffolk	210	0	0	1	0	42	253
Surrey	681	0	1	4	0	0	686
Warwickshire	271	0	4	7	0	0	282
West Sussex	391	1	1	0	0	0	393
Wiltshire	217	0	0	4	0	0	221
TOTAL	16,064	44	36	89	15	501	16,749
WALES							
Mid & West Wales	501	1	0	0	0	0	502
North Wales	289	0	0	0	0	0	289
South Wales	950	0	4	2	0	1	957
TOTAL	1,740	1	4	2	0	1	1,748
GRAND TOTAL	26,737	55	60	179	49	502	27,582

Notes:

1. London had not yet adopted the 16+1 ethnicity classification, and could not be broken down into a 5+1 classification. Data for London is shown in table 15.

2. This group contains Fire and Civil Defence Authorities (FCDAs) and London, which is a Fire and Emergency Planning Authority (FEPA).

3. This category consists of staff where ethnicity is not known either because the fire authority have not collected the information or because members of staff have not responded to the ethnicity questionnaire.

Table 12. Ethnic origin of control fire and rescue service staff at 31 March 2002

	White	Mixed	Asian or Asian British	Black or Black British	Chinese or Other Ethnic Group	Don't know ³	Total
FCDAs and FEPA²							
Greater Manchester London ¹	66	0	0	0	0	0	66
Merseyside	52	0	0	0	0	0	52
South Yorkshire	41	0	0	0	0	0	41
Tyne & Wear	39	0	0	0	0	0	39
West Midlands	64	0	0	2	0	0	66
West Yorkshire	52	0	0	0	0	0	52
TOTAL	314	0	0	2	0	0	316
ENGLAND							
Avon	33	0	0	0	1	0	34
Bedfordshire & Luton	20	1	0	0	0	0	21
Buckinghamshire	21	0	0	1	0	0	22
Cambridgeshire	23	0	0	0	0	0	23
Cheshire	25	0	0	0	0	0	25
Cleveland	28	0	0	0	0	0	28
Cornwall	16	0	0	0	0	0	16
County Durham & Darlington	28	0	0	0	0	0	28
Cumbria	18	0	0	0	0	0	18
Derbyshire	28	0	2	0	0	0	30
Devon	26	0	0	0	0	0	26
Dorset	24	0	0	0	0	0	24
East Sussex	26	0	0	0	0	0	26
Essex	40	0	0	0	0	0	40
Gloucestershire	23	0	0	0	0	0	23
Hampshire	36	0	0	0	0	0	36
Hereford & Worcester	25	0	0	0	0	0	25
Hertfordshire	24	2	0	0	0	1	27
Humberside	31	0	0	0	0	0	31
Isle Of Wight	12	0	0	0	0	0	12
Isles Of Scilly	0	0	0	0	0	0	0
Kent	40	0	0	1	0	0	41
Lancashire	43	0	0	0	0	0	43
Leicestershire	26	0	0	0	0	0	26
Lincolnshire	23	0	0	0	0	0	23
Norfolk	0	0	0	0	0	24	24
North Yorkshire	21	0	0	0	0	0	21
Northamptonshire	21	0	0	0	0	0	21
Northumberland	18	0	0	0	0	0	18
Nottinghamshire	26	0	0	0	0	0	26
Oxfordshire	18	0	0	0	0	0	18
Royal Berkshire	30	0	0	0	0	2	32
Shropshire	17	0	0	0	0	0	17
Somerset	20	0	0	0	0	0	20
Staffordshire	32	0	0	0	0	0	32
Suffolk	20	0	0	0	0	4	24
Surrey	26	0	0	0	0	0	26
Warwickshire	17	0	0	0	0	0	17
West Sussex	27	0	0	0	0	0	27
Wiltshire	21	0	0	0	0	0	21
TOTAL	953	3	2	2	1	31	992
WALES							
Mid & West Wales	35	0	0	0	0	0	35
North Wales	31	0	0	0	0	0	31
South Wales	54	0	0	0	0	0	54
TOTAL	120	0	0	0	0	0	120
GRAND TOTAL	1,387	3	2	4	1	31	1,428

Notes:

1 London had not yet adopted the 16+1 ethnicity classification, and could not be broken down into a 5+1 classification. Data for London is shown in table 15.

2 This group contains Fire and Civil Defence Authorities (FCDAs) and London, which is a Fire and Emergency Planning Authority (FEPA).

3. This category consists of staff where ethnicity is not known either because the fire authority have not collected the information or because members of staff have not responded to the ethnicity questionnaire.

Table 13. Ethnic origin of retained fire and rescue service staff at 31 March 2002

	White	Mixed	Asian or Asian British	Black or Black British	Chinese or Other Ethnic Group	Don't know ²	Total
FCDAs and FEPA¹							
Greater Manchester	18	0	0	0	0	20	38
London	0	0	0	0	0	0	0
Merseyside	0	0	0	0	0	0	0
South Yorkshire	58	0	0	0	0	0	58
Tyne & Wear	23	0	0	0	0	0	23
West Midlands	9	0	0	0	0	0	9
West Yorkshire	161	0	0	0	2	0	163
TOTAL	269	0	0	0	2	20	291
ENGLAND							
Avon	218	0	0	0	0	0	218
Bedfordshire & Luton	148	2	0	1	0	0	151
Buckinghamshire	189	1	0	0	0	0	190
Cambridgeshire	335	0	0	1	0	8	344
Cheshire	190	0	0	0	0	0	190
Cleveland	85	0	0	0	0	0	85
Cornwall	423	1	0	1	0	0	425
County Durham & Darlington	161	0	0	0	0	0	161
Cumbria	439	0	0	0	0	0	439
Derbyshire	363	0	0	1	0	0	364
Devon	724	0	0	3	0	0	727
Dorset	326	0	0	0	2	3	331
East Sussex	239	0	1	0	0	0	240
Essex	476	0	1	0	0	0	477
Gloucestershire	288	1	0	0	0	0	289
Hampshire	688	0	0	0	0	0	688
Hereford & Worcester	353	2	0	0	0	0	355
Hertfordshire	204	0	0	1	0	56	261
Humberside	327	0	0	0	0	0	327
Isle Of Wight	153	0	0	0	0	0	153
Isles Of Scilly	34	0	0	0	0	0	34
Kent	698	0	1	1	0	36	736
Lancashire	351	0	3	2	1	0	357
Leicestershire	225	0	0	0	0	0	225
Lincolnshire	492	1	0	2	0	0	495
Norfolk	0	1	1	1	0	402	405
North Yorkshire	366	0	0	0	0	0	366
Northamptonshire	221	0	1	9	0	0	231
Northumberland	187	0	0	0	0	0	187
Nottinghamshire	351	0	0	3	0	0	354
Oxfordshire	317	0	0	0	1	1	319
Royal Berkshire	144	0	0	1	0	10	155
Shropshire	298	0	0	1	0	0	299
Somerset	372	0	0	0	0	0	372
Staffordshire	397	1	0	0	0	0	398
Suffolk	255	1	1	0	0	144	401
Surrey	128	0	0	1	0	0	129
Warwickshire	178	0	0	0	0	0	178
West Sussex	309	0	1	1	0	0	311
Wiltshire	342	1	0	1	0	0	344
TOTAL	11,994	12	10	31	4	660	12,711
WALES							
Mid & West Wales	691	1	0	0	0	0	692
North Wales	578	1	2	0	0	0	581
South Wales	443	0	0	0	1	0	444
TOTAL	1,712	2	2	0	1	0	1,717
GRAND TOTAL	13,975	14	12	31	7	680	14,719

Notes:

1. This group contains Fire and Civil Defence Authorities (FCDAs) and London, which is a Fire and Emergency Planning Authority (FEPA).

2. This category consists of staff where ethnicity is not known either because the fire authority have not collected the information or because members of staff have not responded to the ethnicity questionnaire.

Table 14. Ethnic origin of non-uniformed fire and rescue service staff at 31 March 2002

	White	Mixed	Asian or Asian British	Black or Black British	Chinese or Other Ethnic Group	Don't know ³	Total
FCDAs and FEPA²							
Greater Manchester London ¹	403	0	3	1	3	1	411
Merseyside	254	0	1	3	2	0	260
South Yorkshire	142	0	0	3	1	0	146
Tyne & Wear	240	0	0	0	1	0	241
West Midlands	433	0	14	17	2	0	466
West Yorkshire	228	0	4	0	1	0	233
TOTAL	1,700	0	22	24	10	1	1,757
ENGLAND							
Avon	95	1	1	1	0	0	98
Bedfordshire & Luton	82	2	1	0	1	0	86
Buckinghamshire	65	0	1	0	0	0	66
Cambridgeshire	123	1	1	0	0	2	127
Cheshire	119	0	0	0	0	0	119
Cleveland	82	0	0	0	0	0	82
Cornwall	73	0	0	0	0	0	73
County Durham & Darlington	65	0	0	0	0	0	65
Cumbria	77	0	0	0	0	0	77
Derbyshire	97	0	3	1	0	0	101
Devon	126	0	0	1	0	0	127
Dorset	88	0	0	0	0	0	88
East Sussex	104	1	0	1	0	0	106
Essex	188	0	0	1	0	0	189
Gloucestershire	70	0	2	0	0	0	72
Hampshire	281	0	3	0	0	0	284
Hereford & Worcester	83	0	0	2	0	0	85
Hertfordshire	120	1	0	0	0	3	124
Humberside	128	0	0	0	0	0	128
Isle Of Wight	20	0	0	0	0	0	20
Isles Of Scilly	2	0	0	0	0	0	2
Kent	220	0	4	1	0	0	225
Lancashire	185	0	4	0	1	0	190
Leicestershire	66	0	3	1	1	0	71
Lincolnshire	49	0	0	0	0	0	49
Norfolk	0	0	1	0	0	87	88
North Yorkshire	87	0	0	0	0	0	87
Northamptonshire	53	0	1	1	0	0	55
Northumberland	25	0	0	0	0	0	25
Nottinghamshire	114	0	1	2	0	0	117
Oxfordshire	65	0	2	0	0	0	67
Royal Berkshire	86	0	1	1	0	4	92
Shropshire	53	0	1	0	0	0	54
Somerset	83	0	0	1	0	0	84
Staffordshire	157	0	2	0	0	0	159
Suffolk	96	0	3	2	0	41	142
Surrey	116	0	0	0	0	0	116
Warwickshire	75	0	4	1	1	0	81
West Sussex	92	0	0	0	0	0	92
Wiltshire	77	1	1	0	0	0	79
TOTAL	3,787	7	40	17	4	137	3,992
WALES							
Mid & West Wales	162	0	0	0	0	0	162
North Wales	88	0	0	0	0	0	88
South Wales	209	0	0	0	2	0	211
TOTAL	459	0	0	0	2	0	461
GRAND TOTAL	5,946	7	62	41	16	138	6,210

Notes:

1. London had not yet adopted the 16+1 ethnicity classification, and could not be broken down into a 5+1 classification. Data for London is shown in table 15.

2. This group contains Fire and Civil Defence Authorities (FCDAs) and London, which is a Fire and Emergency Planning Authority (FEPA).

3. This category consists of staff where ethnicity is not known either because the fire authority have not collected the information or because members of staff have not responded to the ethnicity questionnaire.

Table 15. Ethnic origin of wholetime, fire control and non-uniformed fire and rescue service staff in London at 31 March 2002

	White	Asian	Black	Other	Don't know ¹	Total
Wholetime	5,449	19	194	78	18	5,758
Fire Control	101	1	2	0	5	109
Non-uniformed	754	34	135	34	37	994
TOTAL	6,304	54	331	112	60	6,861

1. This category consists of staff where ethnicity is not known either because the fire authority have not collected the information or because members of staff have not responded to the ethnicity questionnaire.

Table 16. Ethnic origin of wholetime fire and rescue service staff at 31 March 2003

	White	Mixed	Asian or Asian British	Black or Black British	Chinese or Other Ethnic Group	Don't know ²	Total
FCDAs and FEPA¹							
Greater Manchester	1,951	7	6	19	1	155	2,139
London	5,145	100	34	211	48	220	5,758
Merseyside	1,329	0	1	7	5	0	1,342
South Yorkshire	896	5	0	8	5	0	914
Tyne & Wear	993	3	2	1	0	0	999
West Midlands	1,883	4	7	55	22	0	1,971
West Yorkshire	1,650	10	12	6	0	0	1,678
TOTAL	13,847	129	62	307	81	375	14,801
ENGLAND							
Avon	630	4	0	5	0	0	639
Bedfordshire & Luton	309	6	1	3	0	0	319
Buckinghamshire	326	0	0	4	0	0	330
Cambridgeshire	216	7	1	1	1	47	273
Cheshire	618	0	1	3	1	0	623
Cleveland	581	1	3	1	0	0	586
Cornwall	191	1	0	0	0	0	192
County Durham & Darlington	405	0	0	2	0	0	407
Cumbria	274	0	0	0	0	0	274
Derbyshire	461	0	2	3	1	0	467
Devon	563	0	0	2	0	0	565
Dorset	301	0	1	0	2	0	304
East Sussex	414	4	2	1	0	2	423
Essex	926	6	2	3	0	0	937
Gloucestershire	223	0	1	7	2	0	233
Hampshire	797	0	1	1	0	0	799
Hereford & Worcester	346	2	0	2	1	0	351
Hertfordshire	540	6	0	2	0	16	564
Humberside	712	6	0	3	0	0	721
Isle Of Wight	61	0	0	0	0	0	61
Isles Of Scilly	10	0	0	0	0	0	10
Kent	875	1	4	2	0	56	938
Lancashire	1,005	0	1	2	0	0	1,008
Leicestershire	468	1	4	5	0	0	478
Lincolnshire	188	3	0	1	0	0	192
Norfolk	15	0	0	3	0	270	288
North Yorkshire	100	1	0	0	0	250	351
Northamptonshire	208	3	0	2	0	94	307
Northumberland	209	0	0	0	0	0	209
Nottinghamshire	581	0	5	3	0	0	589
Oxfordshire	232	1	0	0	0	0	233
Royal Berkshire	419	1	2	2	3	9	436
Shropshire	212	1	0	2	1	0	216
Somerset	180	0	0	1	0	0	181
Staffordshire	457	9	0	3	2	0	471
Suffolk	197	0	0	1	0	52	250
Surrey	705	0	1	4	0	0	710
Warwickshire	266	0	5	8	0	0	279
West Sussex	332	0	0	0	0	63	395
Wiltshire	216	1	0	4	0	0	221
TOTAL	15,769	65	37	86	14	859	16,830
WALES							
Mid & West Wales	497	1	0	0	0	0	498
North Wales	297	0	0	0	0	0	297
South Wales	963	0	2	3	1	0	969
TOTAL	1,757	1	2	3	1	0	1,764
GRAND TOTAL	31,373	195	101	396	96	1,234	33,395

Notes:

1. This group contains Fire and Civil Defence Authorities (FCDAs) and London, which is a Fire and Emergency Planning Authority (FEPA).

2. This category consists of staff where ethnicity is not known either because the fire authority have not collected the information or because members of staff have not responded to the ethnicity questionnaire.

Table 17. Ethnic origin of control fire and rescue service staff at 31 March 2003

	White	Mixed	Asian or Asian British	Black or Black British	Chinese or Other Ethnic Group	Don't know ²	Total
FCDAs and FEPA¹							
Greater Manchester	73	0	0	0	0	0	73
London	94	1	1	3	0	7	106
Merseyside	54	0	0	0	0	0	54
South Yorkshire	40	0	0	0	0	0	40
Tyne & Wear	43	0	0	0	0	0	43
West Midlands	67	0	0	2	0	0	69
West Yorkshire	52	0	0	0	0	0	52
TOTAL	423	1	1	5	0	7	437
ENGLAND							
Avon	33	0	0	0	0	0	33
Bedfordshire & Luton	25	1	0	0	0	0	26
Buckinghamshire	19	0	0	1	0	0	20
Cambridgeshire	21	0	0	0	0	3	24
Cheshire	27	0	0	0	0	0	27
Cleveland	26	0	0	0	0	0	26
Cornwall	17	0	0	0	0	0	17
County Durham & Darlington	26	0	0	0	0	0	26
Cumbria	17	0	0	0	0	0	17
Derbyshire	26	0	2	0	0	0	28
Devon	26	0	0	0	0	0	26
Dorset	24	0	0	0	0	0	24
East Sussex	26	0	0	0	0	0	26
Essex	43	0	0	0	0	0	43
Gloucestershire	25	0	0	0	0	0	25
Hampshire	39	0	0	0	0	0	39
Hereford & Worcester	23	0	0	0	0	0	23
Hertfordshire	25	2	0	0	0	0	27
Humberside	30	0	0	0	0	0	30
Isle Of Wight	13	0	0	0	0	0	13
Isles Of Scilly	0	0	0	0	0	0	0
Kent	43	0	0	1	0	0	44
Lancashire	44	0	0	0	0	0	44
Leicestershire	29	0	0	0	0	0	29
Lincolnshire	22	0	0	0	0	0	22
Norfolk	0	0	0	0	0	28	28
North Yorkshire	10	0	0	0	0	13	23
Northamptonshire	19	1	0	0	0	0	20
Northumberland	20	0	0	0	0	0	20
Nottinghamshire	26	0	0	0	0	0	26
Oxfordshire	19	0	0	0	0	0	19
Royal Berkshire	30	0	0	0	0	0	30
Shropshire	19	0	0	0	0	0	19
Somerset	21	0	0	0	0	0	21
Staffordshire	31	0	0	0	0	0	31
Suffolk	22	0	0	0	0	4	26
Surrey	26	0	0	0	0	0	26
Warwickshire	17	0	0	0	0	0	17
West Sussex	25	0	0	0	0	3	28
Wiltshire	20	0	0	0	0	0	20
TOTAL	954	4	2	2	0	51	1,013
WALES							
Mid & West Wales	36	0	0	0	0	0	36
North Wales	32	0	0	0	0	0	32
South Wales	55	0	0	0	0	0	55
TOTAL	123	0	0	0	0	0	123
GRAND TOTAL	1,500	5	3	7	0	58	1,573

Notes:

1. This group contains Fire and Civil Defence Authorities (FCDAs) and London, which is a Fire and Emergency Planning Authority (FEPA).

2. This category consists of staff where ethnicity is not known either because the fire authority have not collected the information or because members of staff have not responded to the ethnicity questionnaire.

Table 18. Ethnic origin of retained fire and rescue service staff at 31 March 2003

	White	Mixed	Asian or Asian British	Black or Black British	Chinese or Other Ethnic Group	Don't know ²	Total
FCDAs and FEPA¹							
Greater Manchester	20	0	0	0	0	0	20
London	0	0	0	0	0	0	0
Merseyside	0	0	0	0	0	0	0
South Yorkshire	63	0	0	0	0	0	63
Tyne & Wear	23	0	0	0	0	0	23
West Midlands	11	0	0	0	0	0	11
West Yorkshire	159	0	0	0	0	0	159
TOTAL	276	0	0	0	0	0	276
ENGLAND							
Avon	214	0	1	0	0	0	215
Bedfordshire & Luton	131	1	0	1	0	6	139
Buckinghamshire	199	1	0	0	0	0	200
Cambridgeshire	222	0	0	1	0	104	327
Cheshire	197	0	0	0	0	2	199
Cleveland	89	0	0	0	0	0	89
Cornwall	429	2	0	0	0	0	431
County Durham & Darlington	160	0	0	0	0	0	160
Cumbria	461	0	0	0	0	0	461
Derbyshire	340	0	0	1	0	0	341
Devon	726	0	0	2	0	0	728
Dorset	329	0	0	1	2	0	332
East Sussex	290	0	1	0	0	0	291
Essex	472	0	0	0	0	0	472
Gloucestershire	296	2	0	0	0	0	298
Hampshire	673	0	0	0	0	0	673
Hereford & Worcester	354	1	0	0	0	0	355
Hertfordshire	156	0	0	0	0	52	208
Humberside	335	0	0	0	0	0	335
Isle Of Wight	163	0	0	0	0	0	163
Isles Of Scilly	34	0	0	0	0	0	34
Kent	682	0	1	3	0	33	719
Lancashire	362	0	4	2	1	0	369
Leicestershire	218	0	0	0	0	0	218
Lincolnshire	493	2	0	1	0	2	498
Norfolk	0	1	1	1	0	423	426
North Yorkshire	140	0	0	0	0	252	392
Northamptonshire	144	0	1	0	0	83	228
Northumberland	177	0	0	0	0	0	177
Nottinghamshire	353	0	0	3	0	0	356
Oxfordshire	320	0	0	0	0	0	320
Royal Berkshire	162	0	0	1	0	5	168
Shropshire	289	0	0	0	0	0	289
Somerset	364	0	0	0	0	0	364
Staffordshire	416	4	0	0	0	0	420
Suffolk	235	1	0	0	0	179	415
Surrey	134	0	0	0	0	0	134
Warwickshire	188	0	0	1	0	0	189
West Sussex	266	0	0	2	0	55	323
Wiltshire	314	1	0	1	0	0	316
TOTAL	11,527	16	9	21	3	1,196	12,772
WALES							
Mid & West Wales	703	1	0	0	0	0	704
North Wales	573	0	1	0	0	0	574
South Wales	448	0	0	1	1	0	450
TOTAL	1,724	1	1	1	1	0	1,728
GRAND TOTAL	13,527	17	10	22	4	1,196	14,776

Notes:

1. This group contains Fire and Civil Defence Authorities (FCDAs) and London, which is a Fire and Emergency Planning Authority (FEPA).

2. This category consists of staff where ethnicity is not known either because the fire authority have not collected the information or because members of staff have not responded to the ethnicity questionnaire.

Table 19. Ethnic origin of non-uniformed fire and rescue service staff at 31 March 2003

	White	Mixed	Asian or Asian British	Black or Black British	Chinese or Other Ethnic Group	Don't know ²	Total
FCDAs and FEPA¹							
Greater Manchester	431	1	1	1	2	4	440
London	705	16	40	133	25	26	945
Merseyside	290	0	1	4	4	0	299
South Yorkshire	162	0	1	3	0	1	167
Tyne & Wear	262	0	0	0	1	0	263
West Midlands	464	3	17	22	1	0	507
West Yorkshire	227	0	5	0	1	0	233
TOTAL	2,541	20	65	163	34	31	2,854
ENGLAND							
Avon	101	0	1	1	0	0	103
Bedfordshire & Luton	71	1	1	0	1	0	74
Buckinghamshire	73	0	1	0	0	0	74
Cambridgeshire	109	1	0	1	0	10	121
Cheshire	122	0	0	0	0	3	125
Cleveland	81	0	1	0	0	0	82
Cornwall	77	0	0	0	0	0	77
County Durham & Darlington	70	0	0	0	0	0	70
Cumbria	76	0	0	0	0	0	76
Derbyshire	91	0	5	1	2	0	99
Devon	132	0	0	1	0	0	133
Dorset	93	0	0	0	0	0	93
East Sussex	113	2	0	1	0	0	116
Essex	195	0	1	1	0	0	197
Gloucestershire	70	0	2	0	0	0	72
Hampshire	300	0	3	1	0	0	304
Hereford & Worcester	89	0	1	3	0	0	93
Hertfordshire	123	2	0	0	0	4	129
Humberside	130	0	0	0	0	0	130
Isle Of Wight	23	0	0	0	0	0	23
Isles Of Scilly	2	0	0	0	0	0	2
Kent	218	0	4	1	0	0	223
Lancashire	182	0	1	0	1	0	184
Leicestershire	79	0	3	1	2	0	85
Lincolnshire	48	0	0	0	0	0	48
Norfolk	0	0	1	0	0	87	88
North Yorkshire	36	0	0	0	0	57	93
Northamptonshire	54	0	0	1	1	1	57
Northumberland	32	0	0	0	0	0	32
Nottinghamshire	115	0	1	2	0	0	118
Oxfordshire	69	0	0	1	0	0	70
Royal Berkshire	100	0	1	1	0	0	102
Shropshire	51	0	1	0	0	0	52
Somerset	87	1	0	0	0	0	88
Staffordshire	158	0	1	1	1	0	161
Suffolk	103	0	2	0	0	39	144
Surrey	101	0	0	0	0	0	101
Warwickshire	82	0	4	1	1	0	88
West Sussex	51	0	0	0	0	42	93
Wiltshire	78	1	1	0	0	0	80
TOTAL	3,785	8	36	19	9	243	4,100
WALES							
Mid & West Wales	158	0	1	0	0	3	162
North Wales	94	0	0	0	0	0	94
South Wales	215	0	0	1	1	0	217
TOTAL	467	0	1	1	1	3	473
GRAND TOTAL	6,793	28	102	183	44	277	7,427

Notes:

1. This group contains Fire and Civil Defence Authorities (FCDAs) and London, which is a Fire and Emergency Planning Authority (FEPA).

2. This category consists of staff where ethnicity is not known either because the fire authority have not collected the information or because members of staff have not responded to the ethnicity questionnaire.

Table 20. Gender of fire and rescue service staff at 31 March 2002

	Wholetime			Control room			Retained			Non-uniformed		
	Men	Women	Total	Men	Women	Total	Men	Women	Total	Men	Women	Total
FCDAs and FEPA¹												
Greater Manchester	2,139	9	2,148	7	59	66	38	0	38	127	284	411
London	5,674	84	5,758	29	80	109	0	0	0	499	495	994
Merseyside	1,311	6	1,317	2	50	52	0	0	0	109	151	260
South Yorkshire	904	19	923	7	34	41	57	1	58	78	68	146
Tyne & Wear	1,001	8	1,009	5	34	39	23	0	23	81	160	241
West Midlands	2,003	25	2,028	2	64	66	9	0	9	130	336	466
West Yorkshire	1,647	13	1,660	19	33	52	161	2	163	104	129	233
TOTAL	14,679	164	14,843	71	354	425	288	3	291	1,128	1,623	2,751
ENGLAND												
Avon	643	8	651	18	16	34	215	3	218	39	59	98
Bedfordshire & Luton	324	10	334	3	18	21	147	4	151	32	54	86
Buckinghamshire	300	4	304	2	20	22	184	6	190	28	38	66
Cambridgeshire	268	6	274	4	19	23	336	8	344	58	69	127
Cheshire	621	5	626	8	17	25	183	7	190	43	76	119
Cleveland	610	0	610	2	26	28	85	0	85	35	47	82
Comwall	181	2	183	10	6	16	420	5	425	30	43	73
County Durham & Darlington	407	5	412	1	27	28	156	5	161	30	35	65
Cumbria	269	5	274	5	13	18	433	6	439	38	39	77
Derbyshire	467	15	482	8	22	30	359	5	364	29	72	101
Devon	528	10	538	7	19	26	713	14	727	63	64	127
Dorset	294	4	298	5	19	24	321	10	331	53	35	88
East Sussex	415	8	423	13	13	26	233	7	240	54	52	106
Essex	937	11	948	1	39	40	473	4	477	79	110	189
Gloucestershire	212	14	226	7	16	23	278	11	289	33	39	72
Hampshire	761	9	770	13	23	36	672	16	688	142	142	284
Hereford & Worcester	343	9	352	3	22	25	344	11	355	38	47	85
Hertfordshire	563	7	570	8	19	27	254	7	261	45	79	124
Humberside	712	8	720	11	20	31	323	4	327	41	87	128
Isle Of Wight	58	1	59	8	4	12	148	5	153	7	13	20
Isles Of Scilly	10	0	10	0	0	0	33	1	34	1	1	2
Kent	944	7	951	3	38	41	715	21	736	67	158	225
Lancashire	994	8	1,002	1	42	43	347	10	357	59	131	190
Leicestershire	474	2	476	9	17	26	220	5	225	20	51	71
Lincolnshire	185	2	187	2	21	23	474	21	495	22	27	49
Norfolk	304	4	308	4	20	24	397	8	405	42	46	88
North Yorkshire	357	7	364	6	15	21	353	13	366	30	57	87
Northamptonshire	289	3	292	6	15	21	221	10	231	26	29	55
Northumberland	206	2	208	0	18	18	180	7	187	14	11	25
Nottinghamshire	570	6	576	6	20	26	345	9	354	39	78	117
Oxfordshire	227	4	231	6	12	18	300	19	319	29	38	67
Royal Berkshire	394	3	397	13	19	32	152	3	155	37	55	92
Shropshire	201	5	206	8	9	17	296	3	299	20	34	54
Somerset	179	2	181	5	15	20	362	10	372	40	44	84
Staffordshire	457	14	471	3	29	32	386	12	398	65	94	159
Suffolk	245	8	253	3	21	24	390	11	401	67	75	142
Surrey	672	14	686	1	25	26	124	5	129	42	74	116
Warwickshire	275	7	282	5	12	17	172	6	178	35	46	81
West Sussex	377	16	393	5	22	27	305	6	311	40	52	92
Wiltshire	216	5	221	5	16	21	336	8	344	22	57	79
TOTAL	16,489	260	16,749	228	764	992	12,385	326	12,711	1,634	2,358	3,992
WALES												
Mid & West Wales	493	9	502	9	26	35	676	16	692	63	99	162
North Wales	285	4	289	3	28	31	568	13	581	37	51	88
South Wales	951	6	957	2	52	54	439	5	444	94	117	211
TOTAL	1,729	19	1,748	14	106	120	1,683	34	1,717	194	267	461
GRAND TOTAL	32,897	443	33,340	313	1,224	1,537	14,356	363	14,719	2,956	4,248	7,204

Notes:

1. This group contains Fire and Civil Defence Authorities (FCDAs) and London, which is a Fire and Emergency Planning Authority (FEPA).

Table 21. Gender of fire and rescue service staff at 31 March 2003

	Wholetime			Control room			Retained			Non-uniformed		
	Men	Women	Total	Men	Women	Total	Men	Women	Total	Men	Women	Total
FCDAs and FEPA												
Greater Manchester	2,126	13	2,139	6	67	73	20	0	20	126	314	440
London	5,635	123	5,758	29	77	106	0	0	0	473	472	945
Merseyside	1,327	15	1,342	3	51	54	0	0	0	130	169	299
South Yorkshire	894	20	914	7	33	40	62	1	63	94	73	167
Tyne & Wear	987	12	999	5	38	43	23	0	23	97	166	263
West Midlands	1,944	27	1,971	2	67	69	11	0	11	154	353	507
West Yorkshire	1,654	24	1,678	20	32	52	158	1	159	107	126	233
TOTAL	14,567	234	14,801	72	365	437	274	2	276	1,181	1,673	2,854
ENGLAND												
Avon	629	10	639	17	16	33	212	3	215	42	61	103
Bedfordshire & Luton	308	11	319	4	22	26	135	4	139	26	48	74
Buckinghamshire	323	7	330	1	19	20	194	6	200	32	42	74
Cambridgeshire	267	6	273	2	22	24	318	9	327	57	64	121
Cheshire	617	6	623	8	19	27	190	9	199	48	77	125
Cleveland	583	3	586	2	24	26	89	0	89	36	46	82
Cornwall	190	2	192	11	6	17	423	8	431	31	46	77
County Durham & Darlington	402	5	407	1	25	26	155	5	160	34	36	70
Cumbria	268	6	274	5	12	17	450	11	461	37	39	76
Derbyshire	453	14	467	7	21	28	337	4	341	29	70	99
Devon	554	11	565	7	19	26	704	24	728	68	65	133
Dorset	299	5	304	4	20	24	321	11	332	57	36	93
East Sussex	413	10	423	13	13	26	284	7	291	57	59	116
Essex	922	15	937	1	42	43	468	4	472	84	113	197
Gloucestershire	216	17	233	7	18	25	286	12	298	32	40	72
Hampshire	789	10	799	13	26	39	653	20	673	151	153	304
Hereford & Worcester	339	12	351	2	21	23	342	13	355	40	53	93
Hertfordshire	557	7	564	8	19	27	204	4	208	44	85	129
Humberside	711	10	721	9	21	30	323	12	335	43	87	130
Isle Of Wight	60	1	61	7	6	13	155	8	163	8	15	23
Isles Of Scilly	10	0	10	0	0	0	33	1	34	1	1	2
Kent	929	9	938	3	41	44	695	24	719	66	157	223
Lancashire	995	13	1,008	2	42	44	362	7	369	55	129	184
Leicestershire	475	3	478	11	18	29	213	5	218	29	56	85
Lincolnshire	188	4	192	1	21	22	478	20	498	25	23	48
Norfolk	285	3	288	7	21	28	412	14	426	44	44	88
North Yorkshire	342	9	351	5	18	23	375	17	392	34	59	93
Northamptonshire	304	3	307	5	15	20	219	9	228	27	30	57
Northumberland	203	6	209	2	18	20	171	6	177	20	12	32
Nottinghamshire	580	9	589	6	20	26	340	16	356	42	76	118
Oxfordshire	229	4	233	6	13	19	302	18	320	29	41	70
Royal Berkshire	432	4	436	14	16	30	162	6	168	41	61	102
Shropshire	209	7	216	9	10	19	287	2	289	19	33	52
Somerset	179	2	181	5	16	21	354	10	364	40	48	88
Staffordshire	456	15	471	3	28	31	404	16	420	69	92	161
Suffolk	242	8	250	3	23	26	404	11	415	62	82	144
Surrey	693	17	710	1	25	26	130	4	134	38	63	101
Warwickshire	271	8	279	6	11	17	178	11	189	36	52	88
West Sussex	379	16	395	7	21	28	316	7	323	42	51	93
Wiltshire	214	7	221	5	15	20	307	9	316	23	57	80
TOTAL	16,515	315	16,830	230	783	1,013	12,385	387	12,772	1,698	2,402	4,100
WALES												
Mid & West Wales	490	8	498	10	26	36	685	19	704	65	97	162
North Wales	293	4	297	3	29	32	562	12	574	36	58	94
South Wales	963	6	969	2	53	55	445	5	450	97	120	217
TOTAL	1,746	18	1,764	15	108	123	1,692	36	1,728	198	275	473
GRAND TOTAL	32,828	567	33,395	317	1,256	1,573	14,351	425	14,776	3,077	4,350	7,427

Notes:

1. This group contains Fire and Civil Defence Authorities (FCDAs) and London, which is a Fire and Emergency Planning Authority (FEPA).

SECTION 3: HEALTH AND SAFETY

In 2002/3 there was a period of industrial action, which lasted for 15 days. The injury figures provided by fire authorities excluded incidents that occurred during this period. Consequently, the 2002/03 figures cannot be compared directly with previous years.

Total fire and rescue service injuries

Tables 22 and 23 at the end of this section show the total fire and rescue service injuries sustained by firefighters during operational activities, training for operational activities and during routine activities, for each local authority fire and rescue service in England and Wales during 2001/02 and 2002/03.

The total number of injuries sustained by firefighters rose slightly from 6,508 in 2001/02 to 6,591 in 2002/03; an increase of 1%. There were a total of 1,400 injuries requiring over 3 days off work in 2002/03 compared to 1,327 in 2001/02; an increase of 6%. In 2002/03 there were a total of 102 RIDDOR³ major injuries compared to a total of 111 in 2001/02. There were 3 fatalities in 2002/03.

Total injuries sustained during operational activities, training for operational activities and during routine activities from April 1998 to March 2003 are shown in chart 8. A sharp decline in the total number of injuries was observed from 1999/00 to 2000/01. The total number of injuries levels off from 2000/01 onwards to around 6,500. The trend from April 1998 to March 2003 for the total over 3-day injuries and RIDDOR major injuries is shown in chart 9. The total number of injuries lasting over 3 days fell between 1999/00 and 2001/02 but increased in 2002/03. The total numbers of RIDDOR major injuries increased between 1999/00 and 2001/02 and then fell slightly in 2002/03 to 102 injuries.

³ Reporting of Injuries, Diseases and Dangerous Occurrences Regulations (RIDDOR).

Reportable major injuries are: fracture other than to fingers, thumbs or toes; amputation; dislocation of the shoulder, hip, knee or spine; loss of sight (temporary or permanent); chemical or hot metal burn to the eye or any penetrating injury to the eye; injury resulting from an electric shock or electrical burn leading to unconsciousness or requiring resuscitation or admittance to hospital for more than 24 hours; any other injury: leading to hypothermia, heat-induced illness or unconsciousness; or requiring resuscitation; or requiring admittance to hospital for more than 24 hours; unconsciousness caused by asphyxia or exposure to harmful substance or biological agent; acute illness requiring medical treatment, or loss of consciousness arising from absorption of any substance by inhalation, ingestion or through the skin; acute illness requiring medical treatment where there is reason to believe that this resulted from exposure to a biological agent or its toxins or infected material.

Chart 8. Total injuries during operational incidents in England and Wales, 1998/99 to 2002/03

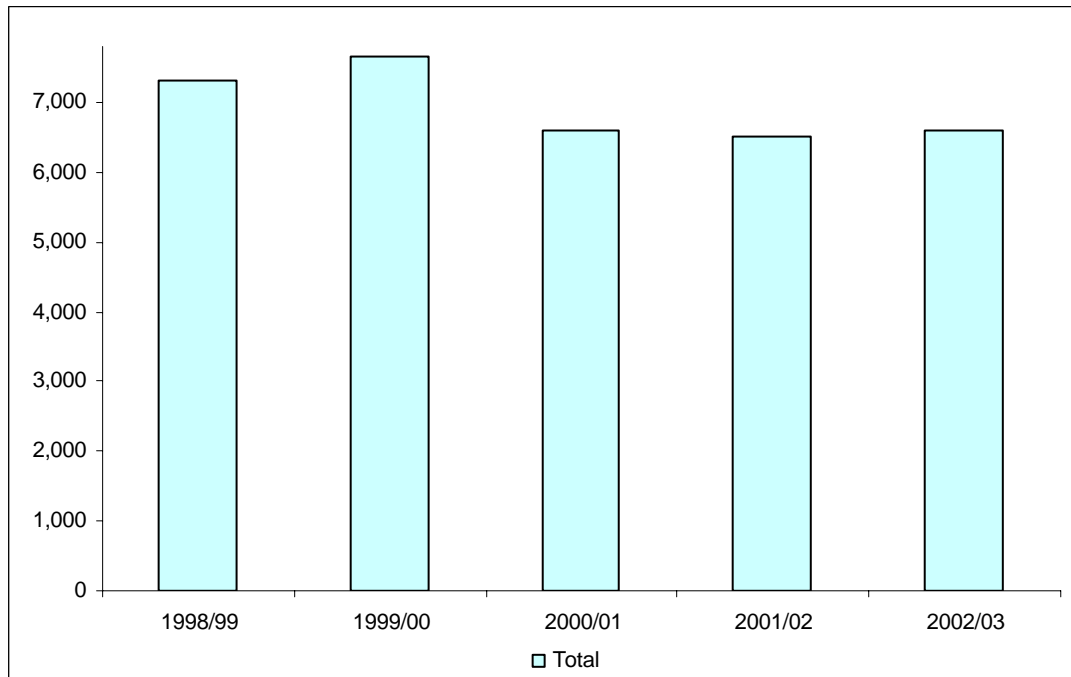
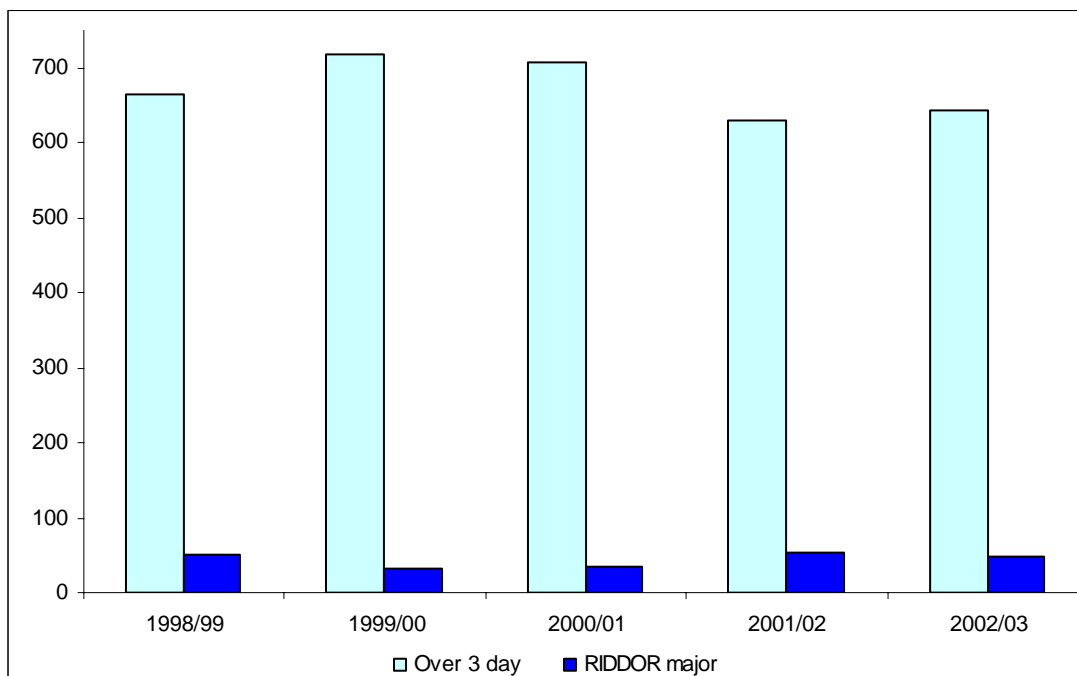


Chart 9. Over 3 day and RIDDOR major injuries during operational incidents in England and Wales, 1998/99 to 2002/03



Total fire and rescue service injuries by type of activity

Tables 24 to 29, at the end of this section, show a breakdown of injuries sustained by firefighters during operational activities (attending fire and special service incidents), training and routine activities for each local authority fire and rescue service in England and Wales during 2001/02 and 2002/03.

Injuries sustained by firefighters while attending fires fell from 2,412 in 2001/02 to 2,386 in 2002/03; a decrease of 1%. With respect to special service incidents, there were 656 injuries to firefighters in 2002/03 compared to 626 in 2001/02, a 5% increase. Of the injuries sustained while attending fires in 2002/03, 499 were injuries requiring over 3 days off work compared to 521 in 2001/02. There were 42 RIDDOR major injuries caused while attending fires in 2002/03, compared to 45 in 2001/02. While attending special service incidents in 2002/03, there were 143 injuries requiring over 3 days off work sustained, compared to 108 in 2001/02; an increase of 32%. There were 6 RIDDOR major injuries caused while attending special service incidents in 2002/03, two less than in 2001/02. There were two fatalities while attending fires in 2002/03.

A 5% decline in firefighters sustaining injuries while training on brigade premises was reported between 2001/02 and 2002/03; a drop from 1,231 to 1,170. In contrast, there was a 19% increase in injuries sustained by firefighters training off brigade premises in 2002/03, from 216 to 257. Of the 1,170 injuries sustained while training on brigade premises in 2002/03, 192 were injuries lasting over 3 days compared to 215 in 2001/02; an 11% decrease. A total of 12 RIDDOR major injuries occurred while training on brigade premises in 2002/03 compared to 17 in 2001/02. While training off brigade premises, 53 injuries lasting over 3 days were sustained in 2002/03 compared to 32 in 2001/02. In addition there were 2 RIDDOR major injuries caused while training off brigade premises in 2002/03, one less than in 2001/02. There was one fatality while training on brigade premises in 2002/03.

In 2002/03, firefighters sustained 1,772 injuries during routine activities on brigade premises compared to 1,682 in 2001/02, an increase of 5%. There were 350 injuries to firefighters during routine activities off brigade premises in 2002/03 compared to 341 in 2001/02. Of the 1,772 injuries sustained during routine activities on brigade premises in 2002/03, 416 were injuries lasting over 3 days compared to 384 in 2001/02; an 8% increase. There were 24 RIDDOR major injuries caused during routine

activities on brigade premises in 2002/03 compared to 33 in 2001/02, a decrease of 27%. Of the 350 injuries sustained during routine activities off brigade premises in 2002/03, 97 were injuries lasting over 3 days compared to 67 in 2001/02, an increase of 45%. Furthermore, there were 16 RIDDOR major injuries caused during routine activities off brigade premises in 2002/03 compared to 5 in 2001/02.

Total injuries from April 1998 to March 2003 by type of activity are shown in chart 10. The majority of injuries occurred during operational activities, with between 43% and 47% of injuries being attributed to operational activities in the past 5 years. A sharp decline in the total number of injuries sustained during operational activities was observed from 1999/00 to 2000/01, followed by a progressive rise from 2000/01 to 2002/03. However, it should be noted that the 2002/03 level of injuries is still substantially lower than the 1999/00 level of injuries. The total number of injuries sustained by firefighters during routine activities fell in 2000/01 from the 1999/00 peak, and has subsequently remained broadly level at around 2000 injuries per year. Routine activities contributed to between 31% and 32% of injuries in the past 5 years. The total number of injuries sustained by firefighters during training decreased steadily from 1998/99 to 2002/03. Training accidents contributed to between 22% and 26% of injuries in the past 5 years.

The trends for over 3-day injuries from April 1998 to March 2003 by type of activity are shown in chart 11. Injuries lasting over 3 days that occurred during operational activities were fairly consistent from 1998/99 to 2000/01, ranging between 664 and 708 injuries. In 2001/02 the number of operational activity injuries lasting over 3 days fell to 629, but rose slightly in 2002/03 to 642. Injuries lasting over 3 days that occurred during routine activities fell between 1999/00 and 2001/02 but increased in 2002/03. Training injuries lasting over 3 days steadily decreased from 1998/99 to 2002/03.

The trends for RIDDOR major injuries from April 1998 to March 2003 by type of activity are shown in chart 12. The number of RIDDOR major injuries that occurred during operational activities increased between 1999/00 and 2001/02, before dipping slightly in 2002/03. The number of major RIDDOR injuries that occurred during routine activities has steadily increased since 2000/01 to 40 in 2002/03.

Chart 10. Total injuries in England and Wales by type of activity, 1998/99 to 2002/03

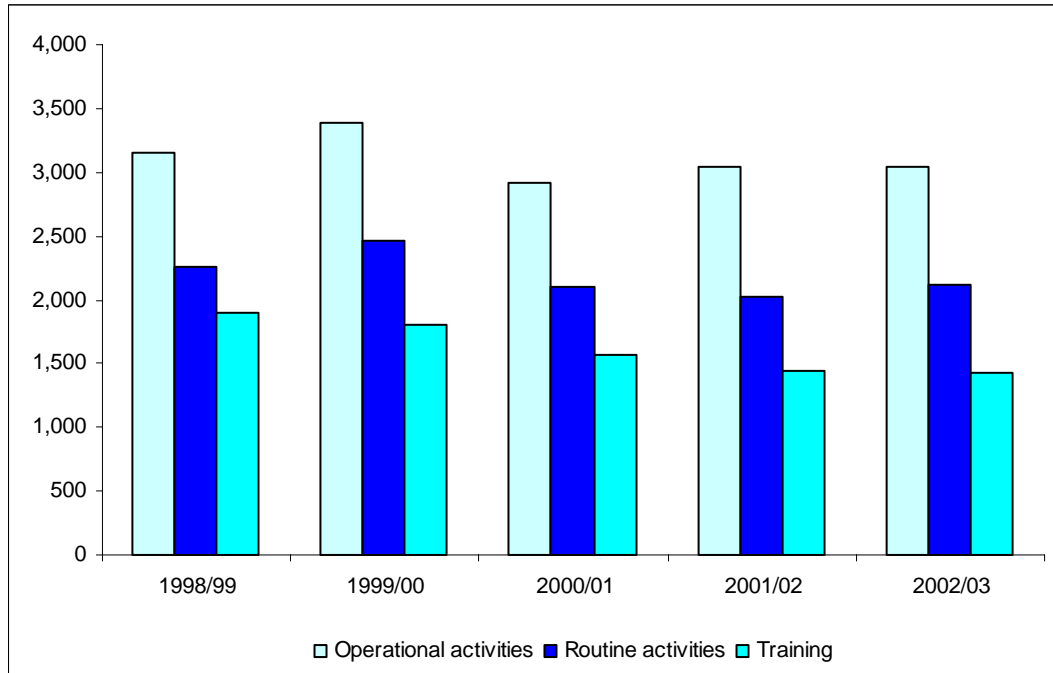


Chart 11. Over 3 day injuries in England and Wales by type of activity, 1998/99 to 2002/03

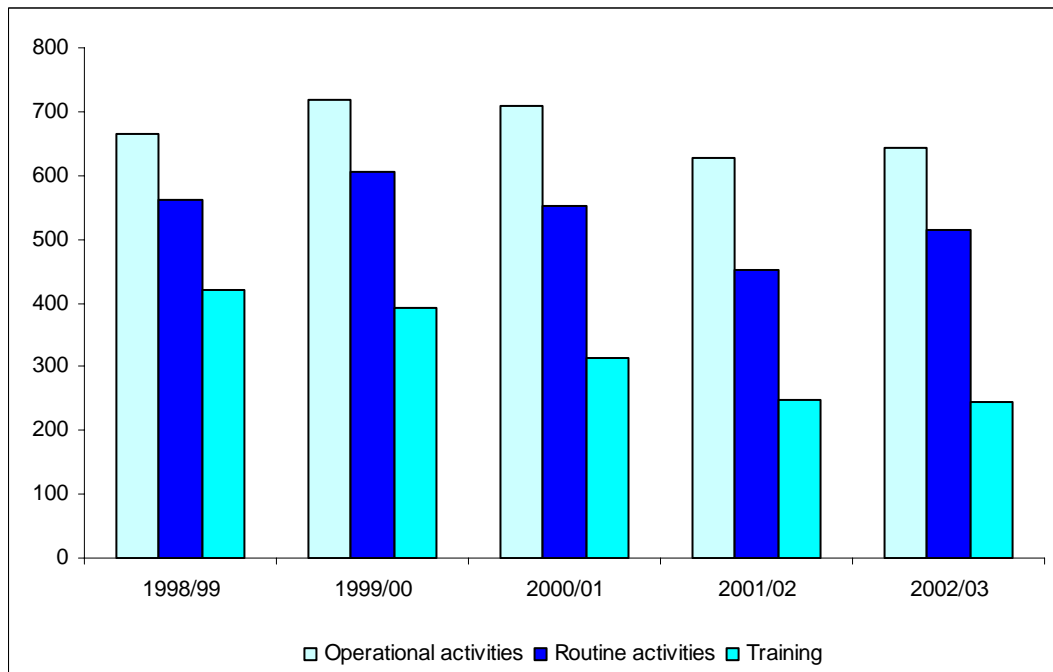


Chart 12. RIDDOR major injuries in England and Wales by type of activity, 1998/99 to 2002/03

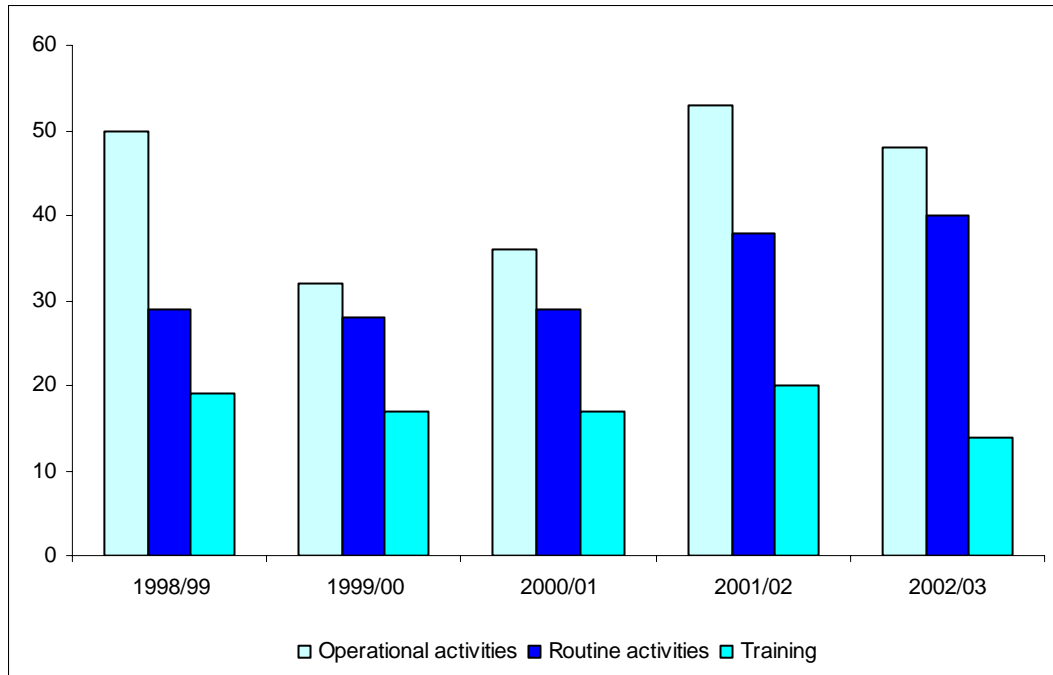


Table 22. Total fire and rescue service injuries during operational incidents, training for operational incidents and routine activities 2001/02

Firefighters - including wholetime, day crew and retained

	Total number of personnel injured	Number of 'over 3 day' injuries	Number of RIDDOR major injuries	Number of fatal injuries
FCDAs and FEPA¹				
Greater Manchester	312	62	5	0
London	811	242	12	0
Merseyside	114	60	1	0
South Yorkshire	174	13	0	0
Tyne & Wear	181	33	2	0
West Midlands	254	51	6	0
West Yorkshire	328	60	1	0
TOTAL	2,174	521	27	0
ENGLAND				
Avon	170	28	0	0
Bedfordshire & Luton	74	20	3	0
Buckinghamshire	64	8	0	0
Cambridgeshire	100	23	0	0
Cheshire	84	10	0	0
Cleveland	N/Av	N/Av	N/Av	N/Av
Cornwall	56	20	12	0
County Durham & Darlington	49	17	1	0
Cumbria	90	14	0	0
Derbyshire	105	22	2	0
Devon	154	20	0	0
Dorset	113	13	1	0
East Sussex	117	25	0	0
Essex	236	40	0	0
Gloucestershire	115	29	0	0
Hampshire	182	22	3	0
Hereford & Worcester	60	4	7	0
Hertfordshire	163	36	0	0
Humberside	177	33	12	0
Isle Of Wight	29	9	10	0
Isles Of Scilly	0	0	0	0
Kent	167	32	0	0
Lancashire	N/Av	N/Av	N/Av	N/Av
Leicestershire	62	9	0	0
Lincolnshire	57	10	0	0
Norfolk	128	20	2	0
North Yorkshire	63	15	0	0
Northamptonshire	120	24	3	0
Northumberland	52	9	2	0
Nottinghamshire	138	45	8	0
Oxfordshire	114	16	0	0
Royal Berkshire	140	41	1	0
Shropshire	49	13	0	0
Somerset	88	31	1	0
Staffordshire	181	27	0	0
Suffolk	114	16	1	0
Surrey	139	19	0	0
Warwickshire	68	6	0	0
West Sussex	84	12	0	0
Wiltshire	71	15	0	0
TOTAL	3,973	753	69	0
WALES				
Mid & West Wales	114	22	8	0
North Wales	92	12	5	0
South Wales	155	19	2	0
TOTAL	361	53	15	0
GRAND TOTAL	6,508	1,327	111	0

Notes:

1. This group contains Fire and Civil Defence Authorities (FCDAs) and London, which is a Fire and Emergency Planning Authority (FEPA).

Table 23. Total fire and rescue service injuries during operational incidents, training for operational incidents and routine activities 2002/03

Firefighters - including wholetime, day crew and retained

	Total number of personnel injured	Number of 'over 3 day' injuries	Number of RIDDOR major injuries	Number of fatal injuries
FCDAs and FEPA¹				
Greater Manchester	290	77	0	1
London	834	267	11	0
Merseyside	133	33	1	0
South Yorkshire	157	16	0	0
Tyne & Wear	182	50	1	0
West Midlands	311	47	5	1
West Yorkshire	233	32	4	0
TOTAL	2,140	522	22	2
ENGLAND				
Avon	209	23	0	0
Bedfordshire & Luton	80	16	2	0
Buckinghamshire	43	12	0	0
Cambridgeshire	93	21	1	0
Cheshire	90	25	0	0
Cleveland	91	6	0	0
Cornwall	59	12	1	0
County Durham & Darlington	92	15	1	0
Cumbria	66	10	0	0
Derbyshire	124	25	1	0
Devon	145	23	1	0
Dorset	99	18	2	0
East Sussex	91	21	0	0
Essex	161	34	1	0
Gloucestershire	78	16	0	0
Hampshire	226	25	19	0
Hereford & Worcester	80	16	0	0
Hertfordshire	134	19	1	0
Humberside	191	31	0	0
Isle Of Wight	30	9	0	0
Isles Of Scilly	2	0	0	0
Kent	137	33	2	0
Lancashire	121	12	3	0
Leicestershire	74	20	0	1
Lincolnshire	51	16	2	0
Norfolk	127	32	1	0
North Yorkshire	67	17	0	0
Northamptonshire	94	19	0	0
Northumberland	33	10	4	0
Nottinghamshire	200	42	0	0
Oxfordshire	69	17	0	0
Royal Berkshire	85	32	0	0
Shropshire	48	11	0	0
Somerset	43	18	0	0
Staffordshire	197	15	4	0
Suffolk	97	17	1	0
Surrey	252	31	0	0
Warwickshire	131	36	22	0
West Sussex	84	17	0	0
Wiltshire	65	13	0	0
TOTAL	4,159	785	69	1
WALES				
Mid & West Wales	92	17	2	0
North Wales	89	43	6	0
South Wales	111	33	3	0
TOTAL	292	93	11	0
GRAND TOTAL	6,591	1,400	102	3

Notes:

1. This group contains Fire and Civil Defence Authorities (FCDAs) and London, which is a Fire and Emergency Planning Authority (FEPA).

Table 24. Fire and rescue service injuries during operational incidents 2001/02
Firefighters - including wholetime, day crew and retained

	Total number of personnel injured		Number of 'over 3 day' injuries		Number of RIDDOR major injuries		Number of fatal injuries	
	At fires	At special service incidents	At fires	At special service incidents	At fires	At special service incidents	At fires	At special service incidents
FCDAs and FEPA¹								
Greater Manchester	210	9	38	3	3	0	0	0
London	214	174	77	47	3	1	0	0
Merseyside	57	4	48	0	1	0	0	0
South Yorkshire	69	16	6	0	0	0	0	0
Tyne & Wear	85	11	19	1	2	0	0	0
West Midlands	110	36	24	6	3	1	0	0
West Yorkshire	140	4	15	0	0	0	0	0
TOTAL	885	254	227	57	12	2	0	0
ENGLAND								
Avon	67	18	10	2	0	0	0	0
Bedfordshire & Luton	26	2	6	0	1	0	0	0
Buckinghamshire	23	1	6	0	0	0	0	0
Cambridgeshire	28	18	10	1	0	0	0	0
Cheshire	32	7	4	0	0	0	0	0
Cleveland	N/Av	N/Av	N/Av	N/Av	N/Av	N/Av	N/Av	N/Av
Cornwall	22	5	7	2	3	2	0	0
County Durham & Darlington	26	6	12	1	0	0	0	0
Cumbria	30	11	9	1	0	0	0	0
Derbyshire	40	6	13	0	1	0	0	0
Devon	40	12	5	0	0	0	0	0
Dorset	74	5	7	1	0	1	0	0
East Sussex	39	18	15	5	0	0	0	0
Essex	77	12	19	0	0	0	0	0
Gloucestershire	35	10	5	3	0	0	0	0
Hampshire	37	13	8	1	1	2	0	0
Hereford & Worcester	20	9	2	0	1	0	0	0
Hertfordshire	36	6	8	1	0	0	0	0
Humberside	84	7	10	1	4	1	0	0
Isle Of Wight	15	1	3	0	5	0	0	0
Isles Of Scilly	0	0	0	0	0	0	0	0
Kent	49	32	9	5	0	0	0	0
Lancashire	N/Av	N/Av	N/Av	N/Av	N/Av	N/Av	N/Av	N/Av
Leicestershire	36	0	5	0	0	0	0	0
Lincolnshire	23	4	7	0	0	0	0	0
Norfolk	48	8	8	1	1	0	0	0
North Yorkshire	23	5	1	1	0	0	0	0
Northamptonshire	42	5	3	3	1	0	0	0
Northumberland	17	2	4	0	2	0	0	0
Nottinghamshire	75	0	14	0	3	0	0	0
Oxfordshire	54	7	6	2	0	0	0	0
Royal Berkshire	27	4	2	0	1	0	0	0
Shropshire	22	6	9	0	0	0	0	0
Somerset	30	30	8	11	0	0	0	0
Staffordshire	46	8	7	1	0	0	0	0
Suffolk	48	1	8	1	1	0	0	0
Surrey	29	25	5	0	0	0	0	0
Warwickshire	16	6	2	1	0	0	0	0
West Sussex	25	20	5	2	0	0	0	0
Wiltshire	23	8	7	0	0	0	0	0
TOTAL	1,384	338	269	47	25	6	0	0
WALES								
Mid & West Wales	43	23	6	3	5	0	0	0
North Wales	35	4	6	1	3	0	0	0
South Wales	65	7	13	0	0	0	0	0
TOTAL	143	34	25	4	8	0	0	0
GRAND TOTAL	2,412	626	521	108	45	8	0	0

Notes:

1. This group contains Fire and Civil Defence Authorities (FCDAs) and London, which is a Fire and Emergency Planning Authority (FEPA).

Table 25. Fire and rescue service injuries during operational incidents 2002/03
Firefighters - including wholetime, day crew and retained

	Total number of personnel injured		Number of 'over 3 day' injuries		Number of RIDDOR major injuries		Number of fatal injuries	
	At fires	At special service incidents	At fires	At special service incidents	At fires	At special service incidents	At fires	At special service incidents
FCDA's and FEPA¹								
Greater Manchester	170	14	49	1	0	0	1	0
London	222	165	62	50	5	1	0	0
Merseyside	71	12	17	3	1	0	0	0
South Yorkshire	69	17	7	4	0	0	0	0
Tyne & Wear	90	9	32	2	1	0	0	0
West Midlands	132	23	8	6	2	0	0	0
West Yorkshire	110	1	18	0	4	0	0	0
TOTAL	864	241	193	66	13	1	1	0
ENGLAND								
Avon	98	33	12	6	0	0	0	0
Bedfordshire & Luton	26	7	4	1	0	0	0	0
Buckinghamshire	6	4	2	0	0	0	0	0
Cambridgeshire	31	4	8	0	1	0	0	0
Cheshire	38	10	15	2	0	0	0	0
Cleveland	27	5	6	0	0	0	0	0
Cornwall	25	8	7	1	1	0	0	0
County Durham & Darlington	49	4	7	0	1	0	0	0
Cumbria	38	5	7	0	0	0	0	0
Derbyshire	38	11	10	2	1	0	0	0
Devon	42	8	5	2	0	0	0	0
Dorset	28	15	4	3	1	0	0	0
East Sussex	38	9	7	2	0	0	0	0
Essex	44	18	9	4	1	0	0	0
Gloucestershire	22	18	4	0	0	0	0	0
Hampshire	31	19	4	2	5	5	0	0
Hereford & Worcester	32	6	8	1	0	0	0	0
Hertfordshire	56	6	7	0	0	0	0	0
Humberside	73	8	8	2	0	0	0	0
Isle Of Wight	15	1	7	0	0	0	0	0
Isles Of Scilly	2	0	0	0	0	0	0	0
Kent	42	18	9	6	2	0	0	0
Lancashire	57	5	5	0	1	0	0	0
Leicestershire	37	4	9	2	0	0	1	0
Lincolnshire	6	12	1	2	0	0	0	0
Norfolk	36	11	10	5	1	0	0	0
North Yorkshire	32	0	10	0	0	0	0	0
Northamptonshire	48	7	10	3	0	0	0	0
Northumberland	12	2	5	1	0	0	0	0
Nottinghamshire	53	43	7	8	0	0	0	0
Oxfordshire	14	8	5	4	0	0	0	0
Royal Berkshire	28	6	6	1	0	0	0	0
Shropshire	24	2	6	1	0	0	0	0
Somerset	29	4	11	2	0	0	0	0
Staffordshire	54	8	2	0	0	0	0	0
Suffolk	58	7	10	2	1	0	0	0
Surrey	74	36	13	3	0	0	0	0
Warwickshire	17	0	6	0	7	0	0	0
West Sussex	20	7	6	1	0	0	0	0
Wiltshire	14	11	2	2	0	0	0	0
TOTAL	1,414	390	274	71	23	5	1	0
WALES								
Mid & West Wales	40	15	7	1	1	0	0	0
North Wales	13	6	12	5	4	0	0	0
South Wales	55	4	13	0	1	0	0	0
TOTAL	108	25	32	6	6	0	0	0
GRAND TOTAL	2,386	656	499	143	42	6	2	0

Notes:

1. This group contains Fire and Civil Defence Authorities (FCDA's) and London, which is a Fire and Emergency Planning Authority (FEPA).

Table 26. Fire and rescue service injuries during training for operational incidents 2001/02
Firefighters - including wholetime, day crew and retained

	Total number of personnel injured		Number of 'over 3 day' injuries		Number of RIDDOR major injuries		Number of fatal injuries	
	On brigade premises	Off brigade premises	On brigade premises	Off brigade premises	On brigade premises	Off brigade premises	On brigade premises	Off brigade premises
FCDA's and FEPA								
Greater Manchester	18	10	2	4	0	1	0	0
London	128	11	30	2	2	0	0	0
Merseyside	7	0	3	0	0	0	0	0
South Yorkshire	29	18	3	1	0	0	0	0
Tyne & Wear	34	3	6	0	0	0	0	0
West Midlands	26	2	4	0	0	0	0	0
West Yorkshire	47	5	10	0	1	0	0	0
TOTAL	289	49	58	7	3	1	0	0
ENGLAND								
Avon	12	0	3	0	0	0	0	0
Bedfordshire & Luton	23	6	9	3	2	0	0	0
Buckinghamshire	8	14	1	0	0	0	0	0
Cambridgeshire	17	4	3	2	0	0	0	0
Cheshire	11	2	3	0	0	0	0	0
Cleveland	N/Av	N/Av	N/Av	N/Av	N/Av	N/Av	N/Av	N/Av
Cornwall	13	3	4	1	2	1	0	0
County Durham & Darlington	6	0	0	0	0	0	0	0
Cumbria	21	6	3	1	0	0	0	0
Derbyshire	26	11	4	2	0	1	0	0
Devon	54	23	6	4	0	0	0	0
Dorset	12	3	3	0	0	0	0	0
East Sussex	23	4	2	1	0	0	0	0
Essex	88	11	5	3	0	0	0	0
Gloucestershire	17	6	6	0	0	0	0	0
Hampshire	115	0	7	0	0	0	0	0
Hereford & Worcester	9	3	1	0	2	0	0	0
Hertfordshire	33	1	5	1	0	0	0	0
Humberside	61	0	16	0	2	0	0	0
Isle Of Wight	9	0	4	0	4	0	0	0
Isles Of Scilly	0	0	0	0	0	0	0	0
Kent	27	3	6	0	0	0	0	0
Lancashire	N/Av	N/Av	N/Av	N/Av	N/Av	N/Av	N/Av	N/Av
Leicestershire	7	3	1	0	0	0	0	0
Lincolnshire	8	9	2	0	0	0	0	0
Norfolk	20	4	3	0	0	0	0	0
North Yorkshire	8	3	10	1	0	0	0	0
Northamptonshire	40	0	6	0	0	0	0	0
Northumberland	14	0	1	0	0	0	0	0
Nottinghamshire	9	1	1	0	2	0	0	0
Oxfordshire	24	4	4	0	0	0	0	0
Royal Berkshire	28	11	7	1	0	0	0	0
Shropshire	6	3	2	1	0	0	0	0
Somerset	12	2	5	1	0	0	0	0
Staffordshire	19	7	2	1	0	0	0	0
Suffolk	19	8	1	0	0	0	0	0
Surrey	26	2	3	0	0	0	0	0
Warwickshire	19	0	2	0	0	0	0	0
West Sussex	18	5	3	1	0	0	0	0
Wiltshire	18	3	3	1	0	0	0	0
TOTAL	880	165	147	25	14	2	0	0
WALES								
Mid & West Wales	14	2	6	0	0	0	0	0
North Wales	38	0	4	0	0	0	0	0
South Wales	10	0	0	0	0	0	0	0
TOTAL	62	2	10	0	0	0	0	0
GRAND TOTAL	1,231	216	215	32	17	3	0	0

Notes:

1. This group contains Fire and Civil Defence Authorities (FCDA's) and London, which is a Fire and Emergency Planning Authority (FEPA).

Table 27. Fire and rescue service injuries during training for operational incidents 2002/03
Firefighters - including wholetime, day crew and retained

	Total number of personnel injured		Number of 'over 3 day' injuries		Number of RIDDOR major injuries		Number of fatal injuries	
	On brigade premises	Off brigade premises	On brigade premises	Off brigade premises	On brigade premises	Off brigade premises	On brigade premises	Off brigade premises
FCDA's and FEPA								
Greater Manchester	27	3	5	1	0	0	0	0
London	105	16	28	5	0	0	0	0
Merseyside	17	4	5	2	0	0	0	0
South Yorkshire	14	1	2	0	0	0	0	0
Tyne & Wear	38	2	6	0	0	0	0	0
West Midlands	49	2	7	0	2	0	1	0
West Yorkshire	43	3	5	0	0	0	0	0
TOTAL	293	31	58	8	2	0	1	0
ENGLAND								
Avon	39	0	0	0	0	0	0	0
Bedfordshire & Luton	16	12	3	3	1	0	0	0
Buckinghamshire	10	4	0	1	0	0	0	0
Cambridgeshire	21	0	4	0	0	0	0	0
Cheshire	8	1	1	1	0	0	0	0
Cleveland	8	0	0	0	0	0	0	0
Cornwall	7	0	0	0	0	0	0	0
County Durham & Darlington	13	0	4	0	0	0	0	0
Cumbria	15	0	2	0	0	0	0	0
Derbyshire	16	7	1	1	0	0	0	0
Devon	37	27	4	5	0	1	0	0
Dorset	20	4	3	2	0	0	0	0
East Sussex	16	2	5	1	0	0	0	0
Essex	44	14	9	2	0	0	0	0
Gloucestershire	14	2	3	1	0	0	0	0
Hampshire	92	56	7	8	5	0	0	0
Hereford & Worcester	4	4	2	0	0	0	0	0
Hertfordshire	32	3	3	0	1	0	0	0
Humberside	55	1	10	0	0	0	0	0
Isle Of Wight	6	1	1	0	0	0	0	0
Isles Of Scilly	0	0	0	0	0	0	0	0
Kent	27	1	4	0	0	0	0	0
Lancashire	17	9	1	2	1	0	0	0
Leicestershire	7	2	4	0	0	0	0	0
Lincolnshire	6	1	1	1	0	0	0	0
Norfolk	20	3	2	0	0	0	0	0
North Yorkshire	19	0	5	0	0	0	0	0
Northamptonshire	19	4	2	0	0	0	0	0
Northumberland	9	1	3	1	0	0	0	0
Nottinghamshire	18	1	0	1	0	0	0	0
Oxfordshire	21	5	2	1	0	0	0	0
Royal Berkshire	0	11	0	3	0	0	0	0
Shropshire	12	2	4	0	0	0	0	0
Somerset	3	3	2	0	0	0	0	0
Staffordshire	43	0	5	0	2	0	0	0
Suffolk	16	1	3	0	0	0	0	0
Surrey	48	2	3	0	0	0	0	0
Warwickshire	37	20	7	8	0	0	0	0
West Sussex	16	10	2	2	0	0	0	0
Wiltshire	14	3	2	0	0	0	0	0
TOTAL	825	217	114	44	10	1	0	0
WALES								
Mid & West Wales	15	3	5	0	0	0	0	0
North Wales	25	4	9	0	0	0	0	0
South Wales	12	2	6	1	0	1	0	0
TOTAL	52	9	20	1	0	1	0	0
GRAND TOTAL	1,170	257	192	53	12	2	1	0

Notes:

1. This group contains Fire and Civil Defence Authorities (FCDA's) and London, which is a Fire and Emergency Planning Authority (FEPA).

Table 28. Fire and rescue service injuries during routine activities 2001/02
Firefighters - including wholetime, day crew and retained

	Total number of personnel injured		Number of 'over 3 day' injuries		Number of RIDDOR major injuries		Number of fatal injuries	
	On brigade premises	Off brigade premises	On brigade premises	Off brigade premises	On brigade premises	Off brigade premises	On brigade premises	Off brigade premises
FCDAs and FEPA¹								
Greater Manchester	63	2	14	1	0	1	0	0
London	238	46	76	10	6	0	0	0
Merseyside	39	7	9	0	0	0	0	0
South Yorkshire	40	2	3	0	0	0	0	0
Tyne & Wear	45	3	6	1	0	0	0	0
West Midlands	70	10	16	1	2	0	0	0
West Yorkshire	120	12	35	0	0	0	0	0
TOTAL	615	82	159	13	8	1	0	0
ENGLAND								
Avon	72	1	12	1	0	0	0	0
Bedfordshire & Luton	15	2	2	0	0	0	0	0
Buckinghamshire	17	1	1	0	0	0	0	0
Cambridgeshire	32	1	7	0	0	0	0	0
Cheshire	23	9	1	2	0	0	0	0
Cleveland	N/Av	N/Av	N/Av	N/Av	N/Av	N/Av	N/Av	N/Av
Cornwall	12	1	5	1	3	1	0	0
County Durham & Darlington	7	4	4	0	1	0	0	0
Cumbria	18	4	0	0	0	0	0	0
Derbyshire	21	1	3	0	0	0	0	0
Devon	13	12	2	3	0	0	0	0
Dorset	16	3	2	0	0	0	0	0
East Sussex	23	10	1	1	0	0	0	0
Essex	47	1	13	0	0	0	0	0
Gloucestershire	42	5	14	1	0	0	0	0
Hampshire	8	9	4	2	0	0	0	0
Hereford & Worcester	16	3	1	0	3	1	0	0
Hertfordshire	81	6	21	0	0	0	0	0
Humberside	23	2	5	1	4	1	0	0
Isle Of Wight	4	0	2	0	1	0	0	0
Isles Of Scilly	0	0	0	0	0	0	0	0
Kent	53	3	10	2	0	0	0	0
Lancashire	N/Av	N/Av	N/Av	N/Av	N/Av	N/Av	N/Av	N/Av
Leicestershire	15	1	3	0	0	0	0	0
Lincolnshire	8	5	1	0	0	0	0	0
Norfolk	31	17	3	5	0	1	0	0
North Yorkshire	20	4	2	0	0	0	0	0
Northamptonshire	27	6	9	3	2	0	0	0
Northumberland	19	0	4	0	0	0	0	0
Nottinghamshire	37	16	25	5	3	0	0	0
Oxfordshire	23	2	3	1	0	0	0	0
Royal Berkshire	42	28	24	7	0	0	0	0
Shropshire	12	0	1	0	0	0	0	0
Somerset	12	2	4	2	1	0	0	0
Staffordshire	44	57	7	9	0	0	0	0
Suffolk	29	9	4	2	0	0	0	0
Surrey	38	19	8	3	0	0	0	0
Warwickshire	25	2	1	0	0	0	0	0
West Sussex	15	1	0	1	0	0	0	0
Wiltshire	17	2	4	0	0	0	0	0
TOTAL	957	249	213	52	18	4	0	0
WALES								
Mid & West Wales	22	10	5	2	3	0	0	0
North Wales	15	0	1	0	2	0	0	0
South Wales	73	0	6	0	2	0	0	0
TOTAL	110	10	12	2	7	0	0	0
GRAND TOTAL	1,682	341	384	67	33	5	0	0

Notes:

1. This group contains Fire and Civil Defence Authorities (FCDAs) and London, which is a Fire and Emergency Planning Authority (FEPA).

Table 29. Fire and rescue service injuries during routine activities 2002/03
Firefighters - including wholetime, day crew and retained

	Total number of personnel injured		Number of 'over 3 day' injuries		Number of RIDDOR major injuries		Number of fatal injuries	
	On brigade premises	Off brigade premises	On brigade premises	Off brigade premises	On brigade premises	Off brigade premises	On brigade premises	Off brigade premises
FCDAs and FEPA¹								
Greater Manchester	76	0	21	0	0	0	0	0
London	295	31	113	9	5	0	0	0
Merseyside	23	6	4	2	0	0	0	0
South Yorkshire	52	4	3	0	0	0	0	0
Tyne & Wear	41	2	10	0	0	0	0	0
West Midlands	91	14	24	2	1	0	0	0
West Yorkshire	64	12	6	3	0	0	0	0
TOTAL	642	69	181	16	6	0	0	0
ENGLAND								
Avon	39	0	4	1	0	0	0	0
Bedfordshire & Luton	14	5	3	2	1	0	0	0
Buckinghamshire	9	10	2	7	0	0	0	0
Cambridgeshire	32	5	8	1	0	0	0	0
Cheshire	26	7	6	0	0	0	0	0
Cleveland	47	4	0	0	0	0	0	0
Cornwall	17	2	3	1	0	0	0	0
County Durham & Darlington	25	1	4	0	0	0	0	0
Cumbria	7	1	1	0	0	0	0	0
Derbyshire	51	1	10	1	0	0	0	0
Devon	24	7	6	1	0	0	0	0
Dorset	27	5	5	1	1	0	0	0
East Sussex	25	1	5	1	0	0	0	0
Essex	39	2	9	1	0	0	0	0
Gloucestershire	19	3	8	0	0	0	0	0
Hampshire	22	6	4	0	0	4	0	0
Hereford & Worcester	26	8	5	0	0	0	0	0
Hertfordshire	36	1	9	0	0	0	0	0
Humberside	50	4	11	0	0	0	0	0
Isle Of Wight	6	1	1	0	0	0	0	0
Isles Of Scilly	0	0	0	0	0	0	0	0
Kent	45	4	10	4	0	0	0	0
Lancashire	31	2	3	1	1	0	0	0
Leicestershire	23	1	5	0	0	0	0	0
Lincolnshire	16	10	5	6	0	2	0	0
Norfolk	42	15	4	11	0	0	0	0
North Yorkshire	16	0	2	0	0	0	0	0
Northamptonshire	13	3	3	1	0	0	0	0
Northumberland	8	1	0	0	4	0	0	0
Nottinghamshire	43	42	12	14	0	0	0	0
Oxfordshire	20	1	5	0	0	0	0	0
Royal Berkshire	31	9	22	0	0	0	0	0
Shropshire	7	1	0	0	0	0	0	0
Somerset	4	0	3	0	0	0	0	0
Staffordshire	52	40	4	4	0	2	0	0
Suffolk	12	3	1	1	0	0	0	0
Surrey	75	17	12	0	0	0	0	0
Warwickshire	37	20	7	8	7	8	0	0
West Sussex	25	6	6	0	0	0	0	0
Wiltshire	22	1	7	0	0	0	0	0
TOTAL	1,063	250	215	67	14	16	0	0
WALES								
Mid & West Wales	15	4	4	0	1	0	0	0
North Wales	15	26	4	13	2	0	0	0
South Wales	37	1	12	1	1	0	0	0
TOTAL	67	31	20	14	4	0	0	0
GRAND TOTAL	1,772	350	416	97	24	16	0	0

Notes:

1. This group contains Fire and Civil Defence Authorities (FCDAs) and London, which is a Fire and Emergency Planning Authority (FEPA).

SECTION 4: OPERATIONAL ACTIVITIES

Fires and Special Services

Table 30 shows the total number of incidents attended by brigades – fires, false alarms and special service incidents – during the years 1998 to 2003. The figures include fires that were not attended as an emergency (because they were known to be extinguished when the call was made, or to which no call was made) and incidents involving heat or smoke damage only. A total of 531,200 fires were attended in 2003 – the highest figure recorded in the time series and a 19% increase compared with 2002. There had been a fall of 3% between 2001 and 2002. Within the total number of fires, there was a 4% fall in primary fires (i.e. property fires) to 188,000 in 2003. However, secondary fires (i.e. outdoor fires) rose to 335,400 (up 37%) – a product of the unusually hot weather in spring and summer 2003⁴. In 2003, the number of false alarms fell by 1% to 407,100. The number of special, service incidents increased by 4% from between 2001/02 to 2002/03, from 174,300 to 180,800.

Table 30. Total incidents attended by fire brigades, 1998-2003¹

Total incidents attended by fire brigades 1998-2003

Type of incident	1998	1999	2000	2001	2002 ²	2003 ² (provisional)
Total Fires	345,700	397,600	399,600	462,900	447,700	531,200
<i>Primary fires</i>	175,100	191,700	192,400	201,400	195,000	188,000
<i>Secondary fires</i>	158,800	195,300	197,300	251,100	244,900	335,400
<i>Chimney fires</i>	11,800	10,600	9,900	10,400	7,800	7,800
False Alarms	397,500	405,400	396,900	414,400	410,400	407,100
Special service incidents ³	158,000	163,800	185,200	174,300	180,800	N/Av

1. Figures are based on the calendar year, except where stated.

2. Includes estimates for incidents not recorded during periods of industrial action.

3. Special service incidents (for example road traffic accidents and incidents of flooding or spilling of toxic substances are counted according to financial years where 2002 in the table refers to the financial year 2002/03.

Figures have been rounded to the nearest 100.

The Fire and Rescue Service in England and Wales attended some 1.05 million emergency calls. Table 31 shows the breakdown of special service incidents attended by local authority fire and rescue services in England and Wales during 2001/02 and 2002/03. Within the special services category 2002/03 saw the fire and rescue services attend 43,444 road traffic accidents compared to 40,410 in 2001/02; an

⁴ Further information on fire incidents can be found in ODPM (2004) Fire Statistics Monitor: Covering period up to 31 December 2003, Issue No. 4/04.

increase of 8%. However, the number of other special service incidents attended by fire and rescue services in 2002/03 was 137,376 compared to 133,852 in 2001/02; an increase of 3%.

Chart 13 shows that over the last five years the number of road traffic accidents (RTA) attended by fire and rescue services has been steadily increasing. The number of other special service incidents (Non RTA) attended by the fire and rescue service has shown a general upward trend since 1998/99. However, there was an unusually large number in 2000/01.

Chart 13. Special service incidents in England and Wales, 1998/99 to 2002/03

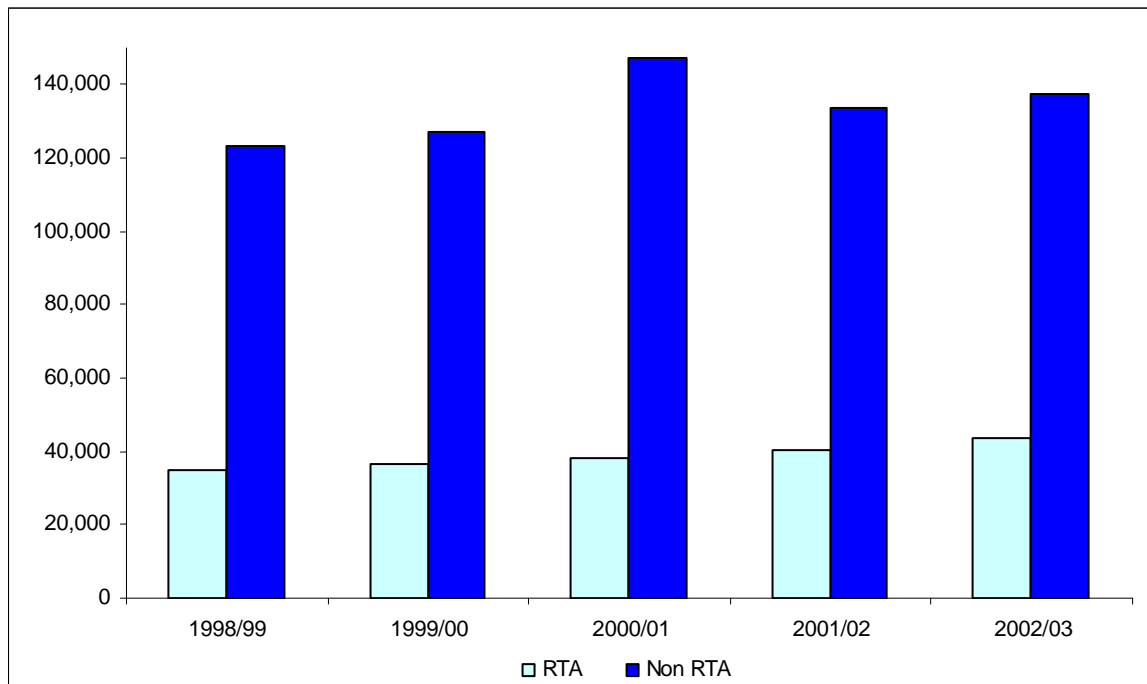


Table 31. Number of special service incidents in England and Wales, 2001/02 and 2002/03

Type of special service	2001/02	2002/03
Road accidents total:	40,410	43,444
of which:		
Persons were extricated from vehicles	10,187	10,432
Services only rendered	25,094	27,446
No services rendered	5,129	5,566
Other total:	133,852	137,376
Spills and leaks	14,885	13,940
Water - removal/provision	13,649	14,311
Effecting entry	14,809	14,525
Lift release	26,057	25,722
Animal rescue	6,048	5,798
Other rescue/release of people	8,244	8,484
Removal of objects from people	4,488	4,544
First aid	2,168	3,367
Make safe	8,288	9,581
Recovery/retrieval of objects	532	511
Standby/precautionary action	2,094	1,974
Aircraft incident (no fire)	268	189
Assistance to Police and Ambulance	3,534	4,349
Industrial	314	307
Sports activity	46	43
Farming accident	36	32
Suicide/attempted suicide	862	860
Railway accident	95	98
Provision of advice:		
Officer and appliance/equipment	1,980	1,927
Officer only	3,199	4,165
Use of appliance /equipment not specified	873	1,136
Services not required:		
Malicious	736	905
Good intent	13,096	13,715
Other	3,098	2,804
Call type not known	1,285	333
Any other special service	3,168	3,758
Total special service incidents	174,262	180,820

¹ The figures provided by Fire Authorities excluded incidents during the period of industrial action.

To account for the industrial action the 2002/03 figures presented have been factored up by 365/350.

Control centres

Tables 32 and 33, at the end of this section, provide a breakdown of the average number of calls handled per control operator, total fires, false alarms and special service incidents by fire and rescue service in England and Wales during 2001/02 and 2002/03. Average number of calls per operator for 2002/03, ranged from over 3,000 in London to 243 in the Isle of Wight.

Table 32. Calls handled per control operator, fires, false alarms and special service incidents, 2001/02

	Calls handled per control operator	Total number of fires ²	Total number of false alarms ²	Special service incidents	
				Road traffic accidents	Other
FCDAs and FEPA¹					
Greater Manchester	1,653	34,497	24,941	1,277	5,066
London	3,606	55,642	78,677	5,792	45,514
Merseyside	1,408	23,348	11,231	887	2,277
South Yorkshire	1,497	15,197	9,755	854	2,186
Tyne & Wear	1,290	17,349	9,651	496	2,041
West Midlands	1,809	28,242	24,865	2,252	7,426
West Yorkshire	1,910	27,423	20,210	1,076	3,064
TOTAL	N/Ap	201,698	179,330	12,634	67,574
ENGLAND					
Avon	1,495	9,344	8,945	941	2,449
Bedfordshire & Luton	878	4,142	3,656	436	946
Buckinghamshire	1,185	5,110	4,494	466	1,011
Cambridgeshire	1,349	4,482	6,852	767	1,921
Cheshire	1,232	9,144	5,628	691	1,449
Cleveland	1,047	9,549	5,605	417	1,262
Cornwall	1,042	2,734	2,306	453	778
County Durham & Darlington	928	6,939	4,245	317	809
Cumbria	830	3,618	3,246	382	636
Derbyshire	835	5,710	6,393	619	1,681
Devon	1,265	6,823	7,242	1,060	2,972
Dorset	990	4,559	4,679	465	1,456
East Sussex	1,006	5,352	5,962	593	2,753
Essex	1,318	10,829	10,806	1,173	4,280
Gloucestershire	661	3,022	2,944	509	1,182
Hampshire	1,555	12,024	10,154	1,203	2,737
Hereford & Worcester	N/Av ³	4,400	3,939	623	1,201
Hertfordshire	1,173	5,864	6,768	595	1,634
Humberside	1,285	10,577	6,066	583	2,099
Isle Of Wight	239	742	767	110	358
Isles Of Scilly	N/Ap	15	11	0	10
Kent	1,360	11,229	10,705	1,324	3,057
Lancashire	1,288	14,349	11,218	763	2,407
Leicestershire	1,113	6,291	6,189	802	1,825
Lincolnshire	916	3,517	2,629	602	1,113
Norfolk	1,108	4,561	4,748	544	1,146
North Yorkshire	1,015	3,919	4,649	644	1,180
Northamptonshire	1,061	5,546	3,945	454	948
Northumberland	606	3,081	2,049	255	446
Nottinghamshire	1,798	11,222	6,878	759	2,033
Oxfordshire	1,209	3,265	5,452	487	921
Royal Berkshire	734	5,223	7,133	614	1,420
Shropshire	759	3,469	2,400	342	914
Somerset	1,030	3,179	3,367	590	886
Staffordshire	1,221	7,873	6,029	787	1,439
Suffolk	800	3,216	4,101	482	1,025
Surrey	1,323	4,782	8,159	920	2,003
Warwickshire	944	3,278	3,326	544	818
West Sussex	871	4,368	6,889	769	1,928
Wiltshire	728	2,793	3,948	631	1,046
TOTAL	N/Ap	230,140	214,522	24,716	60,179
WALES					
Mid & West Wales	998	9,044	4,586	1,000	2,264
North Wales	791	5,892	5,302	448	1,292
South Wales	1,330	20,266	9,657	1,612	2,543
TOTAL	N/Ap	35,202	19,545	3,060	6,099
GRAND TOTAL	N/Ap	467,041	413,397	40,410	133,852

Notes:

1. This group contains Fire and Civil Defence Authorities (FCDAs) and London, which is a Fire and Emergency Planning Authority (FEPA).

2. Figures based on the financial year.

3. The figure of 648 was previously published in an Inspectorate Indicator. This figure has been found to be incorrect; the correct one is not known.

N/Ap. Not applicable.

Figures have been rounded to the nearest whole number, which may affect totals.

Table 33. Calls handled per control operator, fires, false alarms and special service incidents, 2002/03

	Calls handled per control operator ¹	Total number of fires ^{2 p}	Total number of false alarms ^{2 p}	Special service incidents ⁽¹⁾	
				Road traffic accidents	Other
FCDAs and FEPA ³					
Greater Manchester	1,584	34,778	24,260	1,508	5,346
London	3,133	49,064	76,251	5,683	44,318
Merseyside	1,317	25,481	10,591	1,032	3,075
South Yorkshire	1,598	17,016	9,754	921	1,874
Tyne & Wear	1,225	17,513	9,593	512	1,792
West Midlands	1,781	28,799	24,660	2,423	7,150
West Yorkshire	2,075	27,205	20,590	1,088	3,058
TOTAL	N/Ap	199,857	175,699	13,166	66,613
ENGLAND					
Avon	1,375	9,498	10,209	903	2,331
Bedfordshire & Luton	919	4,374	3,132	436	1,256
Buckinghamshire	1,087	4,651	4,273	507	1,173
Cambridgeshire	1,231	4,657	6,586	792	1,341
Cheshire	1,269	9,526	6,110	741	1,403
Cleveland	922	9,837	5,376	471	1,400
Cornwall	1,045	2,786	2,351	510	1,006
County Durham & Darlington	976	6,716	4,320	354	865
Cumbria	815	3,801	3,279	421	634
Derbyshire	817	6,053	6,429	661	1,703
Devon	1,214	6,347	7,576	1,598	4,398
Dorset	888	3,877	4,594	509	1,432
East Sussex	932	4,777	6,040	664	2,780
Essex	1,526	9,955	10,998	1,254	4,396
Gloucestershire	653	3,241	3,107	545	1,154
Hampshire	1,402	10,649	10,463	1,461	2,820
Hereford & Worcester	1,039	4,251	4,091	659	1,197
Hertfordshire	1,070	5,866	6,580	582	1,539
Humberside	1,378	11,476	6,181	664	2,045
Isle Of Wight	243	606	759	93	379
Isles Of Scilly	N/Ap	21	12	0	9
Kent	1,327	11,389	10,673	1,353	3,007
Lancashire	1,183	15,170	11,363	862	2,642
Leicestershire	904	6,067	6,386	880	2,195
Lincolnshire	1,029	3,748	3,124	695	2,387
Norfolk	1,163	4,708	4,895	626	1,179
North Yorkshire	549	3,975	4,718	612	1,610
Northamptonshire	1,089	5,892	4,299	484	1,081
Northumberland	549	2,988	1,933	238	312
Nottinghamshire	2,004	12,568	7,174	845	2,112
Oxfordshire	1,257	3,284	4,520	558	1,092
Royal Berkshire	674	4,795	6,961	623	1,604
Shropshire	746	3,506	2,462	358	938
Somerset	973	3,248	3,126	575	975
Staffordshire	1,225	8,249	6,067	874	1,510
Suffolk	769	3,290	4,101	527	1,142
Surrey	1,269	4,785	7,777	1,062	2,326
Warwickshire	1,037	3,670	3,591	533	856
West Sussex	857	4,021	7,118	842	1,971
Wiltshire	692	2,755	3,814	729	1,264
TOTAL	N/Ap	231,070	216,568	27,099	65,462
WALES					
Mid & West Wales	1,005	9,514	4,579	1,069	2,183
North Wales	759	5,781	5,518	522	968
South Wales	1,419	21,017	9,776	1,587	2,150
TOTAL	N/Ap	36,310	19,873	3,179	5,301
GRAND TOTAL	N/Ap	467,237	412,140	43,444	137,376

Notes:

1. The figures provided by Fire Authorities excluded incidents during the period of industrial action. To account for the industrial action the figures presented have been factored up by 365/350.
 2. Figures based on the financial year and include estimates for incidents not recorded during periods of industrial action.
 3. This group contains Fire and Civil Defence Authorities (FCDAs) and London, which is a Fire and Emergency Planning Authority (FEPA).
- N/Ap. Not applicable.
p. Provisional.

Annex A

Targets for Minority Ethnic Recruitment in the Fire Service

	Target type ¹	Target	Milestones for Measuring Success (years)		
			2002	2004	2009
Fire Service					
Fire Service	National ²	7%	2.5%	3.6%	7%
Uniformed	National ²	7%	2%	3.2%	7%
Non-uniformed	National ²	7%	6.1%	6.6%	8%

1. National target - equivalent to national minority ethnic population (persons aged 18-64, Labour Force Survey (1996-98 12 quarters))

2. With 50 local Brigade targets, see Appendix II in Home Office (2000) Race Equality: The Home Secretary's Employment Targets, First Annual Report, October 2000.

Source: Home Office (2000) Race Equality: The Home Secretary's Employment Targets, First Annual Report, October 2000.